

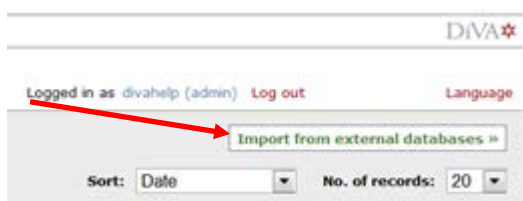
Import references into DiVA

You can import references from many different databases and reference management programmes into DiVA. The following reference formats can be used: PubMed XML, ISI, EndNote XML, Endnote Referer Format, MODS V3, BibTex, BibLatex and RIS.

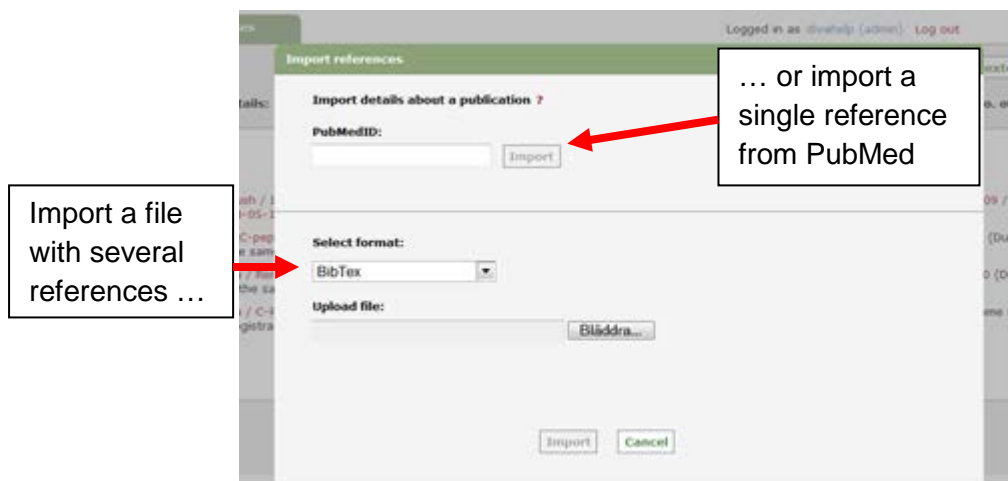
The following reference formats can be used: PubMed XML, ISI, EndNote XML, Endnote Referer Format, MODS V3, BibTex, BibLatex, and RIS.

How to import

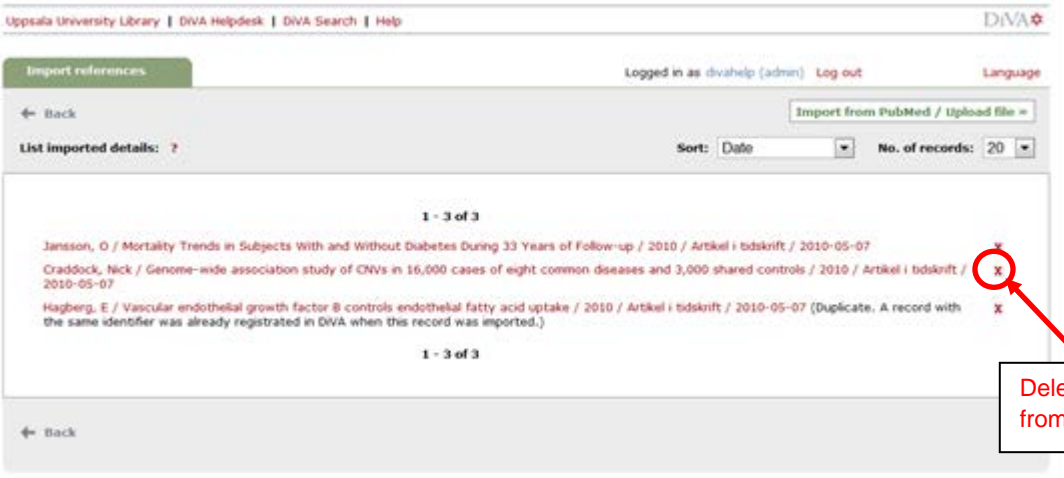
1. Search for the references in a database (e.g. ISI Web of Science, Scopus, PubMed, Libris) or a reference management programme (e.g. EndNote) and save them as a file on your computer.
➡ See instructions below in the section *Alternatives for importing*
2. Log in to DiVA with your user account and password and select *Import references*.
3. Click the button *Import from external databases*.



4. Select format, upload and import your saved file with references. You can also import a single reference from PubMed using its PubMedID (PMID).



The reference or references that you have imported are displayed under *List imported details*.



Uppsala University Library | DiVA Helpdesk | DiVA Search | Help

Import references

Logged in as divahelp (admin) Log out Language

← Back

Import from PubMed / Upload file

List imported details: ?

Sort: Date No. of records: 20

1 - 3 of 3

Jansson, O / Mortality Trends in Subjects With and Without Diabetes During 33 Years of Follow-up / 2010 / Artikel i tidskrift / 2010-05-07

Craddock, Nick / Genome-wide association study of CNVs in 16,000 cases of eight common diseases and 3,000 shared controls / 2010 / Artikel i tidskrift / 2010-05-07

Hagberg, E / Vascular endothelial growth factor B controls endothelial fatty acid uptake / 2010 / Artikel i tidskrift / 2010-05-07 (Duplicate. A record with the same identifier was already registered in DiVA when this record was imported.)

1 - 3 of 3

← Back

Delete a reference from the list.

➡ “Duplicate ...” means that there already is a publication with the same DOI, ISI-id or PubMed-id in DiVA. Click on the reference if you want to edit or complete the registered details.

5. Click on each reference to add details, such as **organisational affiliation and username, for all authors affiliated with Jönköping University**, and any other information that is mandatory. Continue to next step *Review/Publish* and click on *Submit*. References with a full text attached will be reviewed by the University Library before they are published in DiVA.

References that you have imported to DiVA but are not yet completed and submitted, can be found under *Import references > List imported details* next time you log in.

Alternatives for importing

(Click on a heading to go to the section)

- [A. Import a single reference from PubMed](#)
- [B. Import a file with several references from PubMed](#)
- [C. Import a file with several references from ISI Web of Science](#)
- [D. Import a file with several references from EndNote](#)
- [E. Import a file with several references from many other databases](#)

A. Import a single reference from PubMed

Fill in the publication's PubMedID (PMID) and click on *Import*.

Import references

Import details about a publication ?

PubMedID:

Select type:

The article PMID is found in PubMed:

J Med Chem. 2004 Jan 1;47(1):110-22.
PMID: 14695825 [PubMed - indexed for MEDLINE]
[Related Articles](#)

B. Import a file with several references from PubMed

Do a search in PubMed and mark the records in the list that you want to import. Select File and XML under Send to and save the file on your computer.

Display Settings: ☒ Summary, 20 per page, Sorted by Recently Added

Results: 1 to 20 of 340149 Selected: 4

☒ [Diabetes-related changes in auditory brainstem responses.](#)
1. Konrad-Martin D, Austin DF, Griest S, McMillan GP, McDermott D, Fausti S.
Laryngoscope. 2009 Nov 10. [Epub ahead of print]
PMID: 19904812 [PubMed - as supplied by publisher]
[Related articles](#)

☒ [Highly Active State of Autoimmune Pancreatitis With Mikulicz Disease.](#)
2. Kubota K, Wada T, Kato S, Mozaki Y, Yoneda M, Fujita K, Takahashi H, Inamori T, Kirikoshi H, Saito S, Inayama Y, Nakajima A.
Pancreas. 2009 Nov 9. [Epub ahead of print]
PMID: 19904224 [PubMed - as supplied by publisher]
[Related articles](#)

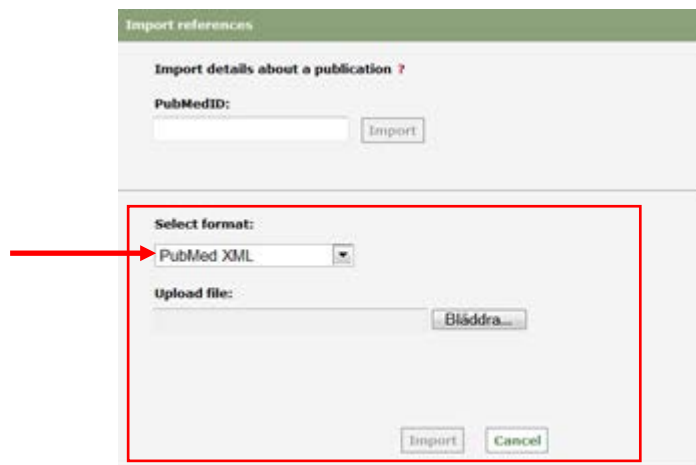
Send to:

Download 4 items.

Format:

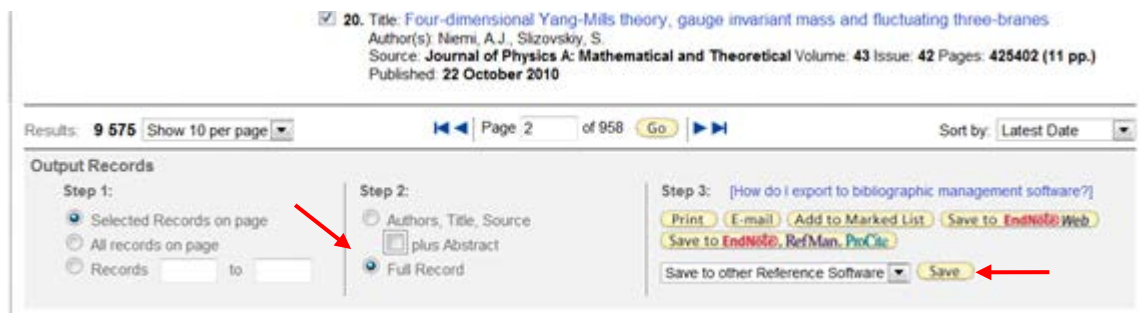
Sort by:

To import the file into DiVA select PubMed XML under *Select format*. Click on *Browse* in order to locate the right file on your computer and upload it to DiVA. The file is called *pubmed_result.txt* unless you gave it another name. Then click *Import*.

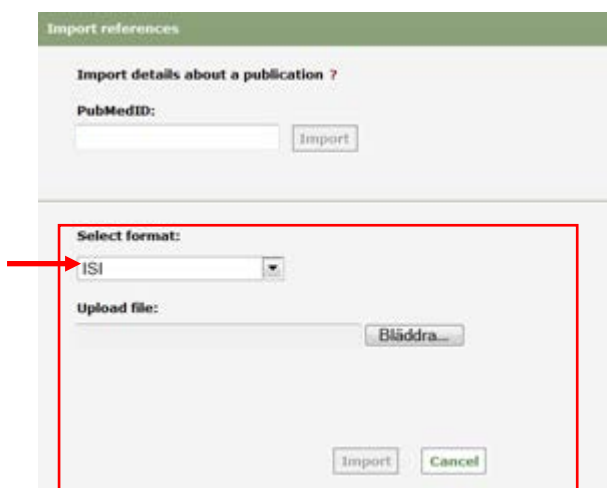


C. Import a file with several references from ISI Web of Science

Do a search in ISI Web of Science and mark the records in the list that you want to import. Go to Output Records (at the bottom of the page), select *Full Record* and click on *Save* to save the file on your computer.



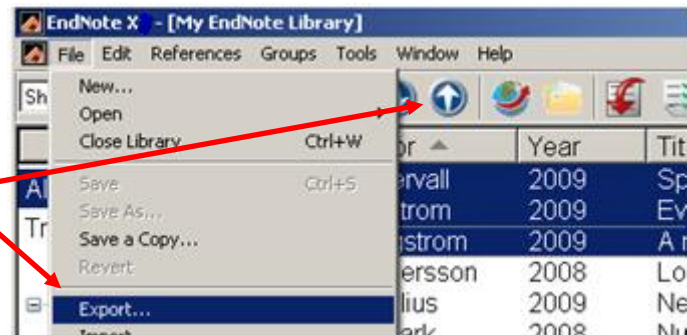
To import the file into DiVA select *ISI* under *Select format*. Click on *Browse* in order to locate the right file on your computer and upload it to DiVA. The file is called *savedrecs.txt* unless you gave it another name. Then click on *Import*.



D. Import a file with several references from EndNote

Open EndNote and mark all the references you want to import.

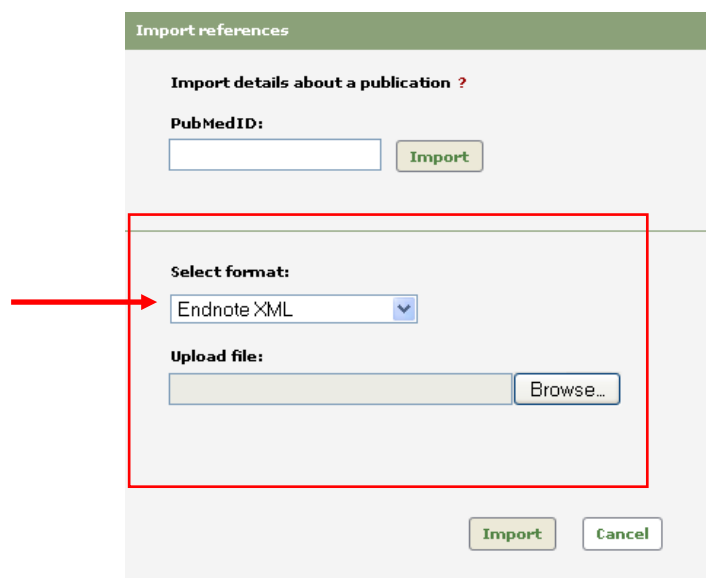
Select *File > Export ...* or click on the *Export* button.



Select *File format = XML* and *Output style = Show all fields*. Save the file on your computer.



To import the file into DiVA select *EndNote XML* under *Select format*. Click on *Browse* in order to locate the right file on your computer. The file is called *My EndNote Library.txt* unless you gave it another name. Then click on *Import*.



E. Import a file with several references from many other databases

You can import references from many other databases and reference management programmes into DiVA by importing them in one of the formats BibTex, BibLatex, RIS, Endnote Referer or MODS. BibTex is a common reference format which is offered by many databases. Make sure that you select the correct reference format under *Select format* when you upload your file to DiVA..