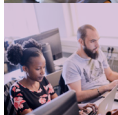




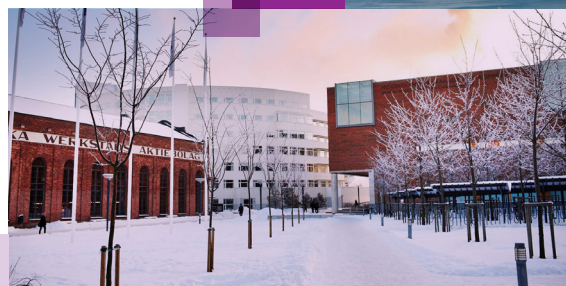
JÖNKÖPING UNIVERSITY

# EXCHANGE STUDIES AT JÖNKÖPING UNIVERSITY

ACADEMIC YEAR  
2022/2023



JÖNKÖPING INTERNATIONAL BUSINESS SCHOOL  
SCHOOL OF ENGINEERING  
SCHOOL OF EDUCATION AND COMMUNICATION  
SCHOOL OF HEALTH AND WELFARE





# WELCOME

We are a modern university that thrives in a changing world and combines academic tradition with engagement. Strongly embedded in the region, with an international body of students and faculty, our campus connects innovative and creative minds from across the globe. Jönköping University is a young, lively, and well-recognised university that hosts thousands of students. Take the chance to get a first-rate education, new experiences, and an opportunity to grow.

Our students are sought after, both nationally and internationally, and many have found a job even before graduating. With a curriculum supporting multicultural experience, you will be prepared for an international career.

Sweden is ranked among the best in the world when it comes to innovation, a position that we nurture both in theory and practice. During your time at Jönköping University, you will have the opportunity to start your own enterprise at our renowned business incubator, Science Park.

Our education integrates collaborations with business and society, embraces sustainability, and develops understanding of the benefits of differences in collaborative endeavours. At Jönköping University, you get an education with high academic standards and profound real-world relevance.

*Welcome to Jönköping University  
– we look forward to meeting you!*

AGNETA MARELL  
*President of Jönköping University*



PUBLISHED BY JÖNKÖPING UNIVERSITY  
DESIGN AND PRODUCTION JÖNKÖPING UNIVERSITY  
PRINT ADDBRAND  
PHOTOGRAPHERS  
PATRIK SVEDBERG, PETER APPELIN, ANNA HÄLLAMS.  
DESTINATION JÖNKÖPING, JÖNKÖPING UNIVERSITY, PRIVATE PHOTOS  
The information in this brochure is from February 2022. For up to date information visit [JU.SE](https://www.ju.se)



## CONTENT

- 3. SWEDEN
- 4. JÖNKÖPING
- 6. THIS IS JU
- 8. ARRIVAL AND ACCOMMODATION
- 9. STUDENT LIFE AND STUDIES
- 10. JÖNKÖPING INTERNATIONAL BUSINESS SCHOOL
- 14. SCHOOL OF ENGINEERING
- 18. SCHOOL OF EDUCATION AND COMMUNICATION
- 22. SCHOOL OF HEALTH AND WELFARE
- 26. APPLICATION AND PREREQUISITES
- 27. ACADEMIC CALENDARS

# SWEDEN

Sweden is known for being a clean, beautiful country, covered with lakes and forests and inhabited by 10 million people who are generous, kind and friendly, if a bit on the quiet side. This is a country that is regularly cited as one of the top places to live in the world.

## A COUNTRY OF INNOVATION

Lots of great innovations have originated here and many Swedish companies have grown as a result of this, for example Volvo, Ericsson, ABB, H&M and let's not forget IKEA. Swedes have a talent for creative thinking and inventiveness too. For example, Skype and Spotify belong to the new generation of technological successes.

## SUSTAINABILITY

Sweden is one of the global sustainability leaders and sees climate change as one of humanity's greatest challenges. Sustainability is at the heart of Swedish customs and values with Greta Thunberg as a world-known and famous spokesperson for these challenges. With her strong mindset she increases the awareness of climate change among people all around the world. "If not now, when?"

## CLEAN, SAFE AND MODERN

It's a beautiful country and the standard of living is high. Sweden has an incredible welfare system and healthcare. By international comparison, it is a prosperous country where wealth is evenly distributed. The citizens love and take care of nature and the environment, which is why their country is such a beautiful and clean place to live.

## EQUAL AND DIVERSE

Sweden is well-known for its inclusiveness and equality and is often cited as a country that is way ahead of the curve in terms of gender equality and LGBTQ rights. Due to high rates of immigration and an influx of employees from other parts of the world, Sweden, especially in urban areas, has become highly culturally diverse. It is a secular country but tolerant towards all religions and faiths.

*When you come here,  
you are free to be  
yourself just the way you are.*

## RICH IN ARTS AND CULTURE

Sweden is a powerhouse in the fields of design, fashion, music, film and literature. It is the biggest exporter of pop music in relation to GDP, boasting international acts such as First Aid Kit, Robyn, Zara Larsson and the late Avicii. There are plenty of ways to get involved in arts and culture, from singing in choirs, to seeing plays, gigs and concerts and visiting museums up and down the country.



# JÖNKÖPING

Home of JU

Jönköping lies on the southern shores of Lake Vättern. It's a beautifully situated city, surrounded by lakes, with stunning waterfront views. It's a city with a lot to offer – stylish bars and restaurants, cosy cafes and shopping streets, theatres and music venues, lakes where you can row, kayak and do other water sports, and many beautiful parks to chill out with friends and enjoy some down time.



## GREAT LOCATION

The city is well placed in the southern part of Sweden with good connections to the major cities in northern Europe. JU is located in the heart of the city which makes it a perfect spot to set out and explore. Just around the corner from campus, you'll find Lake Munksjön's thriving promenade, which is often filled with people, especially in the spring and summer.

## STUDENT CITY

Student life spills out into the city and many student events, such as the famous Spring Inspiration, a fashion show run by students, invite the citizens to join.

## GROWING BUSINESS COMMUNITY

But there's much more to Jönköping than being a great place for fun and recreation. This is a city that lies in one of the fastest growing regions in Sweden. It has a well-deserved reputation for fuelling innovation and offers a favourable business environment where many successful companies already thrive, and new ones are born.

Local industry and the business community actively seek out our knowledge and expertise and want to collaborate with us and our talented students. It is truly a great place to come and study, and potentially start a new career.

## CITY OF DREAMHACK

One example of young entrepreneurship that has put Jönköping on the map is Dreamhack, one of the world's largest digital festivals, which is hosted in Jönköping twice a year and has attracted over 300,000 visitors to the city since 2001.

## SPORT CITY

Jönköping is home to several big sports teams such as – the ice hockey legends HV71 and football heroes J-Södra, as well as many other successful teams in basketball, handball, etc. Sport is a big deal here and there is a huge amount of sports associations and clubs to join, and year-round sporting events to enjoy.

**140,000**  
INHABITANTS

## INTERNATIONAL AND NATIONAL AWARDS



### OUTDOOR LIFE

Best Municipality 2020.

### BEACH

One of the world's best places for swimming (CNN, 2020).

### HEALTH

One of the healthiest cities in the world, when it comes to elderly care (CNN, 2014).

### SPORT CITY

No.2 in Sweden 2020 (No.1, 2017).



The university rowing association, JURA, competes nationally and internationally in university competitions. In September 2019, Jönköping University became the first Swedish university to host the European University Rowing Championships.





# THIS IS JU.

## Jönköping University

Jönköping University (JU) is a young, modern institution with 25 years of experience in knowledge building. JU is one of the most international universities in Sweden and is characterised by an entrepreneurial spirit and extensive cooperation with business and society. It is one of three private, non-profit institutions of higher education in Sweden, with the right to award doctorates, and conforms to national degree regulations and quality requirements. Education, research and commissions are conducted through four schools: School of Health and Welfare, School of Education and Communication, Jönköping International Business School and School of Engineering.



# 350

## PARTNER UNIVERSITIES

SOME EXAMPLES:

Deakin University	Australia
Universidade de Sao Paulo (USP)	Brazil
Shanghai University	China
Universidad de los Andes	Colombia
Kedge Business School	France
WHU Otto Beisheim	
School of Management	Germany
Bocconi University	Italy
Nagoya University of	
Commerce and Business	Japan
Korea University	South Korea
University of Stellenbosch	South Africa
TEC de Monterrey	Mexico
Nanyang Technological University	Singapore
University of St.Gallen	Switzerland
Rangsit University	Thailand
Northumbria University	UK
Texas A&M University	USA
University of Ghana	Ghana
BI Norwegian Business School	Norway

## 90%

GET EMPLOYED WITHIN TWO MONTHS

### WORLD CLASS RESEARCH

- Jönköping International Business School has been ranked second globally and first in Europe in entrepreneurship research (Xu, Chen, Fung & Chan, 2017).
- The research areas of Business Studies and Economics are ranked first in Europe (Nordforsk, 2017).
- World-leading research in materials and manufacturing technology for casting at the School of Engineering.
- The School of Engineering is a member of CDIO, a prestigious collaboration between leading engineering schools globally.
- World-renowned research in ageing at the School of Health and Welfare makes impact on society.
- The CHILD research group, within the field of disability sciences, at the School of Education and Communication has extensive national and international collaborations.

### HIGH QUALITY EDUCATION

- Jönköping International Business School is among the 1 % of business schools worldwide that have earned double accreditation by both EQUIS and AACSB.
- Jönköping University has 800 partner companies and 1,000 research and partner institutions around the world.
- Unique study environment offering equality and a close dialogue with professors and lecturers.
- Approx. 90 % of our students get employed within two months after graduation, one of the highest rates in Sweden.



### INTERNATIONAL PROFILE

- One of the top universities in Scandinavia in terms of international student exchange.
- Four international campuses offering internships at global companies for School of Engineering programme students.
- Multicultural environment with 2,400 international students from 70 countries.
- Approx. 50 % of the students and faculty at Jönköping International Business School are international.

## SWE #2

IN THE EF ENGLISH PROFICIENCY INDEX- THE WORLD'S LARGEST RANKING OF ENGLISH SKILLS

### ENTREPRENEURIAL SPIRIT

- Our students are Top 10 in the World Solar Challenge, building their own solar-powered car to race through Australia.
- Students participate every year in several world-class case competitions.
- JIBS Entrepreneurship Challenge is our own case competition held at Jönköping International Business School every year.
- Around 250-300 new business ideas created by students and researchers every year.

## 1,000

RESEARCH AND PARTNER INSTITUTIONS

## 12,000

STUDENTS

SWEDEN IS RANKED

## TOP 10

IN THE WORLD FOR QUALITY OF EDUCATION

## NO.1

IN ENTREPRENEURSHIP RESEARCH IN EUROPE

### SUSTAINABLE FOCUS

- JU Sustainability & Diversity Network works to inspire stakeholders and arranges our yearly Sustainable Festival.
- Sustainability is embedded in our educational programmes and research.
- We have an active student association for Sustainable Action.
- JU strives to ensure equal opportunities and gender equality in both education and research.
- Our research in Sustainable Communication focuses on the role of communication in the establishment of sustainable development.
- The CHILD research group, within the field of disability sciences, at the School of Education and Communication has extensive national and international collaborations.
- The School of Education and Communication has its very own urban farming on the rooftop of the building.





# STUDENT LIFE AND STUDIES

## STUDENT UNION

The Student Union is run by students for students. It is a non-profit organisation which mainly works with educational quality, social welfare and integration. It also runs various fun activities, trips and events. It ensures students' rights and quality of education through collaborations with the schools' student associations. It is well represented in various decision-making bodies, providing stu-

dents with a genuine opportunity to affect decisions regarding their education. For more information visit: [jonkopingsstudentkar.se/english/about-us](http://jonkopingsstudentkar.se/english/about-us)

## SPORT

Do you love sport? At Jönköping University, you have the chance to join one of the many clubs that are members of Jönköping University Sport Association (JUSA), which is part of the Student Union. The university

also collaborates with other clubs and associations, and is an elite-friendly campus where top athletes can get help to succeed in dual careers. The university rowing association, JURA, competes nationally and internationally in university competitions. Campus Arena is the university's modern sports centre, that includes a well-equipped gym as well as a gymnasium for indoor team sports. Students can get a discounted gym membership.

# ARRIVAL AND ACCOMMODATION

Our campus is located in the heart of the city, with everything you need at your fingertips. There are plenty of places to hang out, meet your friends and study. Here's some information you need for starting your new life at JU.

## GUARANTEED ACCOMMODATION

The Accommodation Office will help you find a place to live. Jönköping University guarantees accommodation to all newly-arriving international students that have been admitted, paid the administrative fee and registered your arrival within the set deadlines. As a part of the accommodation application process, an administrative fee of 700 SEK is required. The fee is non refundable. The accommodation guarantee only applies to the registered student and not family members. You will receive information about this once you have been accepted to Jönköping University.

## PICK-UP SERVICE

At Jönköping University, we offer a

pick-up service for all the new international students if they arrive in Jönköping during the pick-up dates. This means that we will meet you, for example, at the local airport or train/bus station, bring you to the university and get you settled into your accommodation. You can read more at [ju.se/pickup](http://ju.se/pickup).

## INTRODUCTION WEEK

One of the first things you will experience is Introduction Week – an event for all new students to feel welcome, have fun and get to know each other through a variety of social activities, and of course, get prepared for your future studies. The event has been rated one of the best in Europe.

## ACCOMMODATION QUICK FACTS

- **Distance from campus:** most housing is between 1-7 km. A few are within 20 km.
- **Bedroom furnishings:** Bed, wardrobe, desk and chair.
- **Utilities:** electricity, water and internet connection. Access to a shared laundry room and kitchen.
- **Price range:** 3,000-6,500 SEK per month (depending on location).
- **Not included:** bed linen, towels, meals and cleaning services.

*This information is approximate. For more detailed information on our housing options, visit [ju.se](http://ju.se).*



## SERVICE CENTER

The Service Center will help you with general study related questions, course certificates or if you just need to find the way to your lecture room. If they cannot answer your question directly, they'll make sure to guide you to the right place.

## THE UNIVERSITY LIBRARY

There is plenty of space for individual studies, meetings and group studies in the library. Group rooms and reading rooms are available 24 hours a day. A devotional room for prayer and meditation, is located on the third floor of the library building. You will also find a coffee shop in the entrance.

## INTERNATIONAL OFFICE

The International Office cooperates with universities all over the world to offer you the possibility to study in Jönköping. International Office guides you before, during and after your exchange period.

## ACADEMIC RESOURCE CENTER

The Academic Resource Center is open to all students at Jönköping University who want to develop their skills in all types of written and oral assignments, in all subjects, and at all levels. We support you in the process and give you the tools to further develop your text independently.

## SPECIAL EDUCATIONAL SUPPORT

Jönköping University facilitate special educational support for students with disabilities.







## JÖNKÖPING INTERNATIONAL BUSINESS SCHOOL

JIBS is a double accredited, globally-connected, modern business school that is anchored in Scandinavian management traditions. We are international at heart, entrepreneurial in mind, and responsible in action.

### INTERNATIONAL FOCUS

We are the most international business school in Sweden and will offer you a truly international experience. Around 50% of JIBS programme students and teachers are from other countries. This means that your study environment is enriched by diverse perspectives and offers great opportunities for inspiring collaboration, much like it is in an international company. Also, nearly all our programmes give you the opportunity to study abroad.

### DRIVEN BY WORLD CLASS RESEARCH

JIBS has world-leading research in our focus areas: Entrepreneurship, Ownership and Renewal. The Entrepreneurship area is ranked first in Europe and second worldwide (Xu, Chen, Fung & Chan, 2017) and the subjects of Business Studies and

Economics are ranked first in Europe and fourth in the Nordic region, respectively (Nordforsk 2017). This research fuels the quality of the business education that we offer you. Everything we do is characterised by an international outlook. Our education integrates research competencies and corporate connections, and focuses on fostering business leaders who are responsible and entrepreneurial.

### HANDS-ON EXPERIENCE

Our philosophy of teaching is to mix theory with practice. JIBS is proud to have strong ties with a large group of companies and organisations. They support us in the development of our programmes and take part in the delivery of courses. As a student you are challenged to solve concrete business problems.

### DOUBLE ACCREDITED

Being accredited helps JIBS stay on top when it comes to continuous improvement in education, research and the connection of the two. Focusing our efforts on sustainable change and ensuring quality are what makes us relevant and helps you further your career.

### LAUNCHING YOU INTO AN INTERNATIONAL CAREER

Here at JIBS we want you to aim high. Thanks to a research-oriented education that offers real-life experiences, our students often find jobs quickly when they graduate. Deloitte, EY, IBM, Husqvarna and Unilever are just a few of the companies who regularly employ our students.

START YOUR  
INTERNATIONAL  
CAREER.

## 3 REASONS TO CHOOSE JIBS

### INTERNATIONAL ENVIRONMENT

Jönköping International Business School is the most international business school in Sweden with the largest study abroad programme of any Swedish business school.

### GLOBAL CAREER

Did you know that Sweden is the birthplace of many world-shaping companies? Why not kick-start a global career by studying at JIBS?

### PRACTICAL WORK EXPERIENCE

JIBS uses the business world as a platform for education and many courses incorporate internships, company visits, guest lectures, case studies, etc. for students to gain real world experience and create a network.

### IMPORTANT DATES

<b>NOMINATION</b> (For partner universities)	<b>AUTUMN 2022</b> 25 April <b>SPRING 2023</b> 10 October
<b>APPLICATION</b> (For students)	<b>AUTUMN 2022</b> 1 May <b>SPRING 2023</b> 15 October

### PROGRAMMES

#### COURSES IN ENGLISH

A number of courses within the programmes are offered in English for exchange students. All programmes are also offered to international degree-seeking students, entirely in English.

#### BACHELOR OF SCIENCE - 180 CREDITS

- International Economics
- International Management
- Marketing Management
- Sustainable Enterprise Development

#### MASTER OF SCIENCE - 60 CREDITS

- Engineering Management
- International Financial Analysis
- International Marketing

#### MASTER OF SCIENCE - 120 CREDITS

- Applied Economics and Data Analysis
- International Logistics and Supply Chain Management
- Global Management
- Strategic Entrepreneurship
- Digital Business

*“Studying at JIBS has been the best experience! It’s culturally diverse there.”*

### An Thuy Nguyen

Former exchange student from Royal Melbourne Institute of Technology, Saigon South, Vietnam

### WHY DID YOU CHOOSE TO GO ON EXCHANGE?

I wanted to live and learn in a different culture. The good thing about coming to JIBS is that there are a lot of international students, which means the exchange of culture isn’t just with Swedish people, but with those from many other countries as well.

### WHAT IS THE BEST THING ABOUT JIBS?

Studying at JIBS has been the best experience! It’s culturally diverse there.

I had a wide range of courses to choose from as so many are delivered in English. The staff there is very supportive and friendly to international students, and the lecturers are so enthusiastic and always encourage students to develop critical thinking.

### WOULD YOU RECOMMEND EXCHANGE STUDIES TO OTHER STUDENTS?

Yes, definitely. Besides the many studying options, the university provides excellent



services to support international students in various stages of the exchange application, especially the pre-departure process. Jönköping University also offers an accommodation service, so international students like me don’t have to worry about finding a place to live. So, it was pretty easy and thanks to JU I didn’t worry so much before coming here or during my stay. I had a wonderful time here in Sweden!



## COURSES – AUTUMN 2022

Students can only apply for courses at the JU school they are nominated to  
and with which their home university has an exchange agreement.

BACHELOR	COURSE CODE	CREDITS	LEVEL	STUDY PERIOD	DATES
BUSINESS ADMINISTRATION					
Applied Management of Change and Innovation for Sustainability	JAMN28	7,5	G2F	A1	Aug 22 - Oct 30
Basic Financial Accounting	ACBG13	7,5	G1N	A2	Oct 31 - Jan 15*
Business to Business Marketing	MLGN13	7,5	G2F	A1	Aug 22 - Oct 30
Communication in a Cross-Cultural Context	JCCG19	7,5	G1N	A1	Aug 22 - Oct 30
Design and Management of Change and Innovation	JDCK17	7,5	G1F	A2	Oct 31 - Jan 15*
Entrepreneurial Creativity	JENN11	7,5	G2F	A2	Oct 31 - Jan 15*
Entrepreneurship	JESG10	7,5	G1N	A2	Aug 22 - Oct 30
Finance and Accounting for Sustainability	JFAN17	7,5	G2F	A1	Oct 31 - Jan 15*
Foundations of Marketing	JFGG11	7,5	G1N	A1	Aug 22 - Oct 30
International Financial Management	JIFN14	7,5	G2F	A1	Aug 22 - Oct 30
International Management	MGFN13	7,5	G2F	A2	Oct 31 - Jan 15*
Leadership	MGHN13	7,5	G2F	A1	Aug 22 - Oct 30
Marketing Communication	JMCK18	7,5	G1F	A1	Aug 22 - Oct 30
Organizational Theory for Profit and Purpose	JOTK10	7,5	G1F	A1	Aug 22 - Oct 30
Principles of Project Management	MGBG13	7,5	G1N	A2	Oct 31 - Jan 15*
Service Management and Marketing	MLFN13	7,5	G2F	A2	Oct 31 - Jan 15*
Strategic Change	MGJN13	7,5	G2F	A2	Oct 31 - Jan 15*
Strategy and Technology	JSTK14	7,5	G1F	A1	Aug 22 - Oct 30
ECONOMICS					
Economics for a Sustainable Society	JESN10	7,5	G2F	A2	Oct 31 - Jan 15*
Industrial Organisation	JION11	7,5	G2F	A2	Oct 31 - Jan 15*
Intermediate Macroeconomic Theory	JIMK14	7,5	G1F	A2	Oct 31 - Jan 15*
Intermediate Microeconomics and Mathematical Economics	JMMK14	7,5	G1F	A1	Aug 22 - Oct 30
Introduction to Economic Thought	JIEG19	7,5	G1N	A1	Aug 22 - Oct 30
Microeconomic Principles	JMIG12	7,5	G1N	A2	Oct 31 - Jan 15*
Sweden in the Global Economy	ECNK13	7,5	G1F	A2	Oct 31 - Jan 15*
INFORMATICS					
Business Digitalization	JBDK18	7,5	G1F	A2	Oct 31 - Jan 15*
STATISTICS					
Business Statistics 1	FSFG13	7,5	G1N	A1	Aug 22 - Oct 30
Business Statistics 2	JB2K17	7,5	G1F	A2	Oct 31 - Jan 15*
Introduction to Statistical Methods	JITG12	7,5	G1N	A1	Aug 22 - Oct 30
LANGUAGE					
Swedish Language, Culture and Society 1	JSAG13	7,5	G1N	A1	Aug 22 - 30 Oct
Swedish Language, Culture and Society 2	JSAK13	7,5	G1F	A2	31 Oct - 1 Jan*

MASTER	COURSE CODE	CREDITS	LEVEL	STUDY PERIOD	DATES
BUSINESS ADMINISTRATION					
Advanced Corporate Governance and Organizational Control	JAGR21	15	A1N	A2	Oct 31 - Jan 15*
Advanced Financial Accounting, Auditing and Accounting Methods	JADR21	15	A1N	A1	Aug 22 - Oct 30
Advanced Leadership	MGSR23	7,5	A1N	A1	Aug 22 - Oct 30
Advanced Research Methods in Entrepreneurship	JARR26	7,5	A1N	A2	Oct 31 - Jan 15*
Advanced Supply Chain Management 1	JA1R26	7,5	A1N	A1	Aug 22 - Oct 30
Advanced Supply Chain Management 2: Integration and Alliances	JA2S26	7,5	A1F	A2	Oct 31 - Jan 15*
Consumer Behavior	JCBR27	7,5	A1N	A1	Aug 22 - Oct 30
Digital Entrepreneurship	JDER29	7,5	A1N	A2	Oct 31 - Jan 15*
Digitalization and Industrial Dynamics	JDDR22	7,5	A1F	A1	Aug 22 - Oct 30
Entrepreneurial Growth	ENOR23	7,5	A1N	A1	Aug 22 - Oct 30
Entrepreneurship: Creating a New Venture	JEPS21	7,5	A1N	A2	Oct 31 - Jan 15*
Entrepreneurship: Person and Process	ENRR23	7,5	A1N	A1	Aug 22 - Oct 30
Global Strategy	JGSR21	7,5	A1N	A2	Oct 31 - Jan 15*
International Distribution and Retailing	JIDR25	7,5	A1N	A1	Aug 22 - Oct 30
Leading and Organizing Innovation Work**	JLOR27	7,5	A1N	A1 A2	Aug 22 - Jan 15*
Managing Responsibly for Corporate Sustainability	JMSR20	7,5	A1N	A1	Aug 22 - Oct 30
Market Communication in a Digital World	MLSR23	7,5	A1N	A2	Oct 31 - Jan 15*
Marketing Research	MLTR23	7,5	A1N	A2	Oct 31 - Jan 15*
Marketing Theory	JMVR20	7,5	A1N	A1	Aug 22 - Oct 30
Understanding Digital Business	JUDR26	7,5	A1N	A1	Aug 22 - Oct 30
ECONOMICS					
Advanced Macroeconomics	JMAR21	7,5	A1N	A2	Oct 31 - Jan 15*
Advanced Mathematics for Economics	JMMR21	7,5	A1N	A1	Aug 22 - Oct 30
Advanced Microeconomics	JMCR21	7,5	A1N	A1	Aug 22 - Oct 30
Advanced Security Markets and Financial Contracts	JASR24	7,5	A1N	A2	Oct 31 - Jan 15*
Advanced Topics in Finance	JATR29	7,5	A1N	A2	Oct 31 - Jan 15*
Applied Econometrics	JAIR20	7,5	A1N	A2	Oct 31 - Jan 15*
International Portfolio Management and Investment Analysis	JIPR24	7,5	A1N	A1	Aug 22 - Oct 30
LAW					
Business Law in a Digital Context**	JBLR27	7,5	A1F	A1 A2	Aug 22 - Jan 15*
STATISTICS					
Predictive Analysis with Machine Learning	JPAR22	7,5	A1N	A1	Aug 22 - Oct 30
Programming and Big Data Analysis	JPBR22	7,5	A1N	A1	Aug 22 - Oct 30

\*Courses and regular exams end by December 23 in the autumn semester. There might be assignments to hand in online with deadline January 15,

which is the official end of the autumn semester.

\*\* This course is given fully online.

## COURSES – SPRING 2023

Students can only apply for courses at the JU school they are nominated to  
and with which their home university has an exchange agreement.

BACHELOR	COURSE CODE	CREDITS	LEVEL	STUDY PERIOD	DATES
BUSINESS ADMINISTRATION					
Brand Management	JBMN14	7,5	G2F	S2	Mar 27 - Jun 04
Corporate Finance 1	FSAK13	7,5	G1F	S1 S2	Jan 16 - Mar 26 Mar 27 - Jun 04
Corporate Finance 2	FSBN13	7,5	G2F	S2	Mar 27 - Jun 04
Finance and Business Analysis	FSCN13	7,5	G2F	S1	Jan 16 - Mar 26
Governance for Sustainability and Responsible Ownership	JGSN18	7,5	G2F	S2	Mar 27 - Jun 04
Human Resource Management in a Globalized World	JHRK13	7,5	G1F	S1	Jan 16 - Mar 26
International Marketing	MLIN13	7,5	G2F	S2	Mar 27 - Jun 04
Leading and Owning a Family Enterprise	JLFN10	7,5	G2F	S1	Jan 16 - Mar 26
Management Accounting	ACDK13	7,5	G1F	S1	Jan 16 - Mar 26
Marketing Communication	JMCK18	7,5	G1F	S2	Mar 27 - Jun 04
Marketing Management	MLBK13	7,5	G1F	S2	Mar 27 - Jun 04
Organizing and Leading in a Sustainable World	JOSG10	7,5	G1N	S1 S2	Jan 16 - Mar 26 Mar 27 - Jun 04
Project Management	MGIN13	7,5	G2F	S1	Jan 16 - Mar 26
Purchasing and Sales	MLDK13	7,5	G1F	S2	Mar 27 - Jun 04
Responsible Enterprise	JREN10	7,5	G2F	S1	Jan 16 - Mar 26
Supply Chain Management	MLCK13	7,5	G1F	S1	Jan 16 - Mar 26
Sustainable Venture Development Across Borders	JSVN11	7,5	G2F	S2	Mar 27 - Jun 04
The Sustainable Enterprise - Social and Ecological Perspectives	JSEK17	15	G1F	S1	Jan 16 - Jun 04
ECONOMICS					
Applied Economics	JAEN13	7,5	G2F	S1	Jan 16 - Mar 26
Corporate Finance 1	FSAK13	7,5	G1F	S1 S2	Jan 16 - Mar 26 Mar 27 - Jun 04
Corporate Finance 2	FSBN13	7,5	G2F	S2	Mar 27 - Jun 04
Development Economics	JDEK17	7,5	G1F	S2	Mar 27 - Jun 04
Econometrics 1	JE1K10	7,5	G1F	S1	Jan 16 - Mar 26
Econometrics 2	JE2N10	7,5	G2F	S2	Mar 27 - Jun 04
Geographical Economics	JEGN16	7,5	G2F	S1	Jan 16 - Mar 26
International Macroeconomics and Finance	ECJK13	7,5	G1F	S2	Mar 27 - Jun 04
International Trade Theory	JTTK18	7,5	G1F	S1 S2	Jan 16 - Mar 26 Mar 27 - Jun 04
Introduction to Mathematical Methods for Economic Analysis	JIMG12	7,5	G1F	S1	Jan 16 - Mar 26
Macroeconomic Principles	JMPG14	7,5	G1N	S1	Jan 16 - Mar 26
LAW					
International Marketing Law and Consumer Protection	JIMG14	7,5	G1N	S1	Jan 16 - Mar 26
LANGUAGE					
Swedish Language, Culture and Society 1	JSAG13	7,5	G1N	S1	23 Jan - 2 Apr
Swedish Language, Culture and Society 2	JSAK13	7,5	G1F	S2	3 Apr - 1 Jan*

MASTER	COURSE CODE	CREDITS	LEVEL	STUDY PERIOD	DATES
BUSINESS ADMINISTRATION					
Contemporary Issues in International Marketing	JCIR25	7,5	A1N	S2	Mar 27 - Jun 04
Corporate Entrepreneurship and Strategic Renewal	JCER27	7,5	A1N	S1	Jan 16 - Mar 26
Digital Business Modeling	JDBR27	7,5	A1N	S1	Jan 16 - Mar 26
Digital Marketing	JDMS27	7,5	A1F	S2	Mar 27 - Jun 04
Entrepreneurial Finance	ENNR23	7,5	A1N	S2	Mar 27 - Jun 04
Family Business Development	JFBR21	7,5	A1N	S2	Mar 27 - Jun 04
Family Entrepreneurship	JFER21	7,5	A1N	S2	Mar 27 - Jun 04
Global Marketing Management	JGLR22	7,5	A1N	S2	Mar 27 - Jun 04
Humanitarian Logistics	JHLR21	7,5	A1N	S2	Mar 27 - Jun 04
Logistics Firms and Logistics Services	MLRR23	7,5	A1N	S1	Jan 16 - Mar 26
Managing a Multinational	JMUR23	7,5	A1N	S1	Jan 16 - Mar 26
Supply Chain Sustainability	JSSS23	7,5	A1F	S2	Mar 27 - Jun 04
ECONOMICS					
Applied Economics for Decision Making	JEDR21	30	A1N	S1 S2	Jan 16 - Jun 04
Derivatives Securities	FSOR23	7,5	A1N	S2	Mar 27 - Jun 04
INFORMATICS					
Data Analysis for Decision-Making	JDAS27	7,5	A1F	S1	Jan 16 - Mar 26
IT-Enabled Changes in Supply Chain Management	JENR20	7,5	A1N	S1	Jan 16 - Mar 26
STATISTICS					
Analytical Methods for Economic and Financial Analysis	FSSS23	7,5	A1F	S1	Jan 16 - Mar 26

### EXPLANATION OF COURSE LEVELS

#### BACHELOR LEVEL

**G1N** - First cycle, has only upper-secondary level entry requirements

**G1F** - First cycle, has less than 60 credits in first cycle courses as entry requirements

**G2F** - First cycle, has at least 60 credits in first cycle courses as entry requirements

#### MASTER LEVEL

**A1N** - Second cycle, has only first cycle course(s) as entry requirements

**A1F** - Second cycle, has second cycle course(s) as entry requirements

This is an overview of the courses we expect to be offering in the academic year 2022-2023.

If there are additions or cancellations, these will be updated on our website. **JU.SE/JIBS/COURSES**





**INVENT TOMORROW.**

## SCHOOL OF ENGINEERING

Our vision is to be leaders in Europe in developing and spreading new technology and knowledge that will reinforce the international competitiveness of small and medium-sized enterprises.

### A BROAD BASE OF SKILLS

Our goal is to prepare you for achievement in business and give you an education that meets market demands. Our courses have a broad technical knowledge base to equip you with engineering skills and to stimulate entrepreneurial spirit. Our programmes are unique in that they provide knowledge from topic areas other than technology, such as leadership, communication, business and sustainability.

### INDUSTRY CONTACT

Contact with industry is an important part of our education in order to ensure that what you learn is anchored in reality. We

have many partnerships with leading companies such as *Saab, Volvo, Kongsberg Automotive, Fagerhult, Scania and Husqvarna Group*.

### TOP OF THE CLASS

The School of Engineering is one of Sweden's leading educators and a member of the CDIO initiative, which is a prestigious collaboration between leading engineering schools worldwide. We are also world leaders for research in materials and manufacturing technology for casting.

### INTERNATIONAL COLLABORATION

School of Engineering collaborate with

### IMPORTANT DATES

**NOMINATION**  
(For partner universities)

**AUTUMN 2022**  
25 April  
**SPRING 2023**  
10 October

**APPLICATION**  
(For students)

**AUTUMN 2022**  
1 May  
**SPRING 2023**  
15 October

partner universities and companies abroad, both regarding exchange studies, internships and thesis work abroad. As a student at School of Engineering you'll meet students from all over the world. Students come here to study programmes on bachelor or master level as well as exchange courses.

## PROGRAMMES

### COURSES IN ENGLISH

A number of courses within the programmes are offered in English for exchange students.

### BACHELOR OF SCIENCE/ENGINEERING PROGRAMMES - 180 CREDITS

- Architectural Engineering
- Building Engineering/Civil Engineering
- Embedded Systems
- Industrial and Production Management
- Logistics and Management
- Product Development and Industrial Design
- Software Engineering and Mobile Platforms
- Sustainable Supply Chain Management\*

### BACHELOR PROGRAMMES - 180 CREDITS

- Lighting Design
- New Media Design\*
- Networking, Infrastructure and Cyber Security

### BACHELOR + MASTER PROGRAMMES - 300 CREDITS

- Industrial Product Realisation
- Computer Engineering

### MASTER PROGRAMME - 60 CREDITS

- User Experience Design\*

### MASTER PROGRAMMES - 120 CREDITS

- AI Engineering\*
- Materials and Manufacturing\*
- Product Design\*
- Production Engineering and Management\*
- Supply Chain Operations Management\*
- Sustainable Building Information Management\*

### HIGHER EDUCATION DIPLOMAS - 120 CREDITS

- 3D Technology
- Product Development with Furniture Design

\*Those programmes are also offered to international degree-seeking students, entirely in English.

## "It is easy to meet new people"

### Patricia Alonso Muela

former exchange student at JU from Escuela Técnica Superior de Ingenieros Industriales (ETSI), Universidad Politécnica de Madrid (UPM) Spain.

### WHY DID YOU CHOOSE TO GO ON EXCHANGE?

I wanted a unique experience that improved my language skills, made me more independent and opened my mind to a new culture and a new way of working.

### WHAT IS THE BEST THING ABOUT JÖNKÖPING UNIVERSITY?

It has to be the international environment and the student life – there are lots of student associations and activities to do, which makes it easy to meet new people.

Also, the facilities here are amazing: the library, the student restaurants, the computer labs. Everything is open 24/7. JU has done a great job with their computer system here, you can log on and work anywhere on campus.

### WOULD YOU RECOMMEND EXCHANGE STUDIES TO OTHER STUDENTS?

Yes, I would, and I would especially recommend JU as I felt more comfortable with the learning system there and their grading system was also more practical



Photo: Private

than the one in Spain. Furthermore, JU has a career centre that can help with your CV and prepare you for job interviews. It's a good idea to come here for your final year of studies, so that you can get ready for setting out on your future career!



COURSES – AUTUMN 2022

Students can only apply for courses at the JU school they are nominated to and with which their home university has an exchange agreement.

BACHELOR	COURSE CODE	CREDITS	LEVEL	STUDY PERIOD	DATES
CONSTRUCTION ENGINEERING					
Architectural Engineering	TATN19	6	G2F	A1	Aug 22 - Jan 15*
BIM 1 Modelling and Presentation	TIBG17	6	G1N	A1	Aug 22 - Jan 15*
Energy and Building Services Engineering	TEIN19	6	G2F	A1	Aug 22 - Oct 23
Housing Design	TBUK18	6	G1F	A1	Aug 22 - Oct 23
COMPUTER SCIENCE AND INFORMATICS					
Client-Server Communication	TSPK18	7,5	G1F	A1	Aug 22 - Oct 23
Content Design for New Media	TINK12	7,5		A2	Oct 24 - Jan 15*
Custom Project Management	TPNK18	7,5	G1F	A2	Oct 24 - Jan 15*
Digital Marketing and Social Media	TDMK19	7,5	G1N	A1	Aug 22 - Oct 23
Fundamentals of Graphic Design	TGGG11	7,5	G1N	A2	Aug 22 - Oct 23
Information Security	TIHG10	7,5	G1N	A2	Oct 24 - Jan 15*
Introduction to Script Programming	TSPG17	7,5	G1N	A2	Oct 24 - Jan 15*
iOS Development	TISK18	7,5	G1F	A2	Oct 24 - Jan 15*
IT Service Management	TSMN19	7,5	G2F	A2	Oct 24 - Jan 15*
Marketing Communication	TMCK18	7,5	G1F	A2	Oct 24 - Jan 15*
Motion Graphics	TMGN17	7,5	G2F	A2	Oct 24 - Jan 15*
Network Programming	TNPK18	7,5	G1F	A2	Oct 24 - Jan 15*
Object-oriented Software Development	TOMK18	6	G1F	A1	Aug 22 - Oct 23
Object-oriented Software Development with Design Patterns	TOUK18	7,5	G1F	A1	Aug 22 - Oct 23
Operating Systems	TOSK18	7,5	G1F	A2	Oct 24 - Jan 15*
Research Methods in Computer Science and Informatics	TFIN18	7,5	G2F	A2	Oct 24 - Jan 15*
Software Engineering Project Methods	TMJN10	7,5	G2F	A1	Aug 22 - Oct 23
Web Development Fundamentals	TGWK12	7,5	G1F	A1	Aug 22 - Oct 23
Web and User Interface Design	TWTG10	15	G1F	A2	Oct 24 - Jan 15*
INDUSTRIAL ENGINEERING AND MANAGEMENT					
Innovative Production Systems Development	TUIN18	7,5	G2F	A2	Oct 24 - Jan 15*
IT in Supply Chains	TSCN11	7,5	G1F	A1	Aug 22 - Oct 23
Leadership and Project Management	TLPG18	7,5	G1N	A2	Oct 24 - Jan 15*
Lean and Green Engineering	TLGK19	7,5	G1F	A1	Aug 22 - Oct 23
Logistics Engineering	TTQG18	7,5	G1N	A1	Aug 22 - Oct 23
Principles of Sustainable Supply Chain Management	TSSG18	7,5	G1N	A2	Oct 24 - Jan 15*
Purchasing	TIKN10	7,5	G2F	A1	Aug 22 - Oct 23
Research Methods and Communication	TFKG18	7,5	G1N	A1	Aug 22 - Oct 23
Simulation in Industrial Engineering	TSEP11	7,5	G2F	A1	Aug 22 - Oct 23
Quality Management and Engineering	TKYK19	7,5	G2F	A2	Oct 24 - Jan 15*
Transportation and Warehousing	TTLN18	7,5	G2F	A2	Oct 24 - Jan 15*
Transportation and Warehousing	TTLN18	7,5	G2F	A2	Oct 25 - Jan 16*
LIGHTING DESIGN					
Daylighting	TDPN12	15	G2F	A1	Aug 22 - Oct 23
Lighting for Expo and Events	TLEN12	15	G2F	A1	Aug 22 - Oct 23
Lighting Masterplan	TPSN12	9	G2F	A2	Oct 24 - Jan 15*
Lighting Science	TBVN19	6	G2F	A2	Oct 24 - Jan 15*
Luminaire Design	TLDN12	9	G2F	A2	Oct 24 - Jan 15*
MATERIALS AND MANUFACTURING					
Component Casting	TMKK11	7,5	G1F	A2	Oct 24 - Jan 15*
Component Casting**	TKGK11	6	G1F	A1	Aug 22 - Oct 16
Environmental Impact Assessment of Castings**	TKGK19	3	G1F	A2	Dec 05 - Jan 15*
Manufacturing Technology	TTVK18	6	G1F	A1	Aug 22 - Jan 15*
GENERAL COURSES AND SWEDISH LANGUAGE					
Intercultural and International Communication	TIKG18	7,5	G1N	A2	Oct 24 - Jan 15*
Multivariable Calculus	TFVK17	7,5	G1F	A1	Aug 22 - Oct 23
Swedish Language, Culture and Society 1	TS1G15	7,5	G1N	A1	Aug 29 - Oct 30
Swedish Language, Culture and Society 2	TS2K15	7,5	G1F	A2	Oct 31 - Jan 01*

MASTER	COURSE CODE	CREDITS	LEVEL	STUDY PERIOD	DATES
CONSTRUCTION ENGINEERING					
Advanced Building Information Delivery	TADS28	6	A1F	A2	Oct 03 - Jan 15*
Analyses, Simulations and Assessment systems	TASR22	7,5	A1N	A1	Aug 22 - Oct 23
BIM - Requirements and Specifications	TBRR22	7,5	A1F	A2	Oct 24 - Jan 15*
Knowledge Intensive BIM	TKBS28	6	A1F	A2	Oct 03 - Jan 15*
Platforms and Configuration	TPFS29	9		A2	Oct 03 - Jan 15*
Scientific Introduction to BIM and Sustainability	TSIR22	7,5	A1N	A1	Aug 22 - Oct 23
COMPUTER SCIENCE AND INFORMATICS					
Artificial Intelligence	TARI29	7,5	A1N	A1	Aug 22 - Oct 23
Data Science	TDSR22	7,5	A1N	A2	Oct 24 - Jan 15*
Embedded and Distributed AI	TEDS22	7,5	A1F	A2	Oct 24 - Jan 15*
Knowledge Representation and the Semantic Web	TSWR21	7,5	A1N	A2	Oct 24 - Jan 15*
Mathematics for Intelligent Systems	TMAR21	7,5	A1N	A1	Aug 22 - Oct 23
Next Generation Web	TNWR21	7,5	A1N	A2	Oct 24 - Jan 15*
Research Methods for Intelligent Systems	TRIS22	7,5	A1F	A1	Aug 22 - Oct 23
State-of-the-Art in AI Research	TSFS22	7,5	A1F	A2	Oct 24 - Jan 15*
Natural Language Processing and Text Mining	TSST22	7,5	A1F	A1	Aug 22 - Oct 23
Web Personalisation	TWPR21	7,5	A1N	A1	Aug 22 - Oct 23
INDUSTRIAL ENGINEERING AND MANAGEMENT					
Advanced Research Methods in Supply Chain Operations Management	TARR21	7,5	A1N	A1	Aug 22 - Oct 23
Designing Supply Chain Operations	TSCS21	7,5	A1F	A2	Oct 24 - Jan 15*
Engineering and Inter-Cultural Encounters	TIUR21	7,5	A1N	A2	Oct 24 - Jan 15*
Introduction to Supply Chain Operations Management	TISR21	7,5	A1N	A1	Aug 22 - Oct 23
Operations Strategy and Innovation	TOSS21	7,5	A1F	A2	Oct 24 - Jan 15*
Sustainable Production	THPR22	7,5	A1N	A2	Oct 24 - Jan 15*
MATERIALS AND MANUFACTURING					
Analysis of Casting Defects**	TGAS22	3	A1F	A2	Oct 10 - Nov 06
Applications of Computational Fluid Dynamics and Heat Transfer	TBSS22	7,5	A1F	A1	Aug 22 - Oct 23
Liquid Metal Processing - Aluminum Alloys**	TALS22	3	A1F	A1	Sep 19 - Oct 16
Liquid Metal Processing – Ferrous Alloys**	TJLS22	3	A1N	A2	Oct 10 - Nov 06
Materials and Manufacturing Technology	TTTR21	7,5	A1N	A1	Aug 22 - Oct 23
Modelling and Simulation of Casting**	TMS22	6	A1F	A2	Nov 07 - Jan 15*
Moulding Materials in Foundry Technology**	TFGS22	3	A1N	A2	Nov 07 - Dec 04
Polymer and Composite Technology	TPKR21	7,5	A1N	A2	Oct 24 - Jan 15*
Solidification Processing**	TSPS22	3	A1F	A1	Aug 22 - Sep 18
MECHANICAL ENGINEERING					
Advanced CAD	TACR21	7,5	A1N	A2	Oct 24 - Jan 15*
Applied Engineering Design	TTKR22	7,5	A1N	A1	Aug 22 - Oct 23
Chemical Thermodynamics	TCHR21	7,5	A1N	A2	Oct 24 - Jan 15*
Design Philosophy and Practice**	TDPR21	7,5	A1N	A1	Aug 22 - Oct 23
Digitalization and Automation in Engineering Processes	TDAR22	7,5	A1N	A1	Aug 22 - Oct 23
FEA and Optimization Driven Design	TFOS22	7,5	A1F	A1	Aug 22 - Oct 23
Integrated Product and Production Development	TPUS22	7,5	A1F	A2	Oct 24 - Jan 15*
Integrated Product Realization	TIPR22	7,5	A1N	A1	Aug 22 - Oct 23
Manufacturing Process Simulations	TTPS22	7,5	A1F	A2	Oct 24 - Jan 15*

COURSES – SPRING 2023

Students can only apply for courses at the JU school they are nominated to and with which their home university has an exchange agreement.

BACHELOR	COURSE CODE	CREDITS	LEVEL	STUDY PERIOD	DATES
CONSTRUCTION ENGINEERING					
History of Architecture	TAHK18	3	G1F	S2	Mar 27 - Jun 04
Geographical Information Systems	TGK18	6	G1F	S1	Jan 16 - Mar 26
Urban Space	TSDN18	6	G2F	S1	Jan 16 - Mar 26
COMPUTER SCIENCE AND INFORMATICS					
Android Development	TAGK19	7,5	G1F	S1	Jan 16 - Mar 26
Databases	TDRK18	6	G1F	S1	Jan 16 - Mar 26
Digital Electronics with VHDL	TDVK19	7,5	G1F	S1	Jan 16 - Mar 26
Foundations of Programming	TGPK12	7,5	G1F	S2	Mar 27 - Jun 04
Intelligent Mobile Systems	TIGK10	7,5	G1F	S2	Mar 27 - Jun 04
Research Methods in Computer Science and Informatics	TFIN13	7,5	G2F	S1	Jan 16 - Mar 26
Trends in Human-Computer Interaction	THCN13	7,5	G2F	S1	Jan 16 - Mar 26
User Experience Design	TUEK12	7,5	G1F	S1	Jan 16 - Mar 26
Visual Communication	TVKK12	7,5	G1F	S2	Mar 27 - Jun 04
Web Development - Advanced Concepts	TFWN19	7,5	G2F	S1	Jan 16 - Mar 26
INDUSTRIAL ENGINEERING AND MANAGEMENT					
Business Planning and Entrepreneurship	TBPG19	7,5	G1N	S1	Jan 16 - Mar 26
Retailing	TDHN11	7,5	G2F	S1	Jan 16 - Mar 26
Supply Chain and Social Responsibility	TSCK12	7,5	G1F	S2	Mar 27 - Jun 04
Sustainable Business Relationships	THAN19	7,5	G2F	S1	Jan 16 - Mar 26
Work-Human-Technology	TAMK19	7,5	G1F	S1	Jan 16 - Mar 26
MECHANICAL ENGINEERING					
CAD-Solid Modelling, Basic Level Modelling	TCSG19	7,5	G1N	S1	Jan 16 - Jun 04
Basic FEM-analysis	TGFK10	7,5	G1F	S1	Jan 16 - Mar 26
Basic Thermodynamics and Transport Phenomena	TGTK19	3	G1F	S1	Jan 16 - Mar 26
Engineering Materials	TKSK18	7,5	G1F	S1	Jan 16 - Mar 26
Mechanics 2	T2MK10	7,5	G1F	S1	Jan 16 - Mar 26
GENERAL COURSES AND SWEDISH LANGUAGE					
Basic Calculus	TGAG19	7,5	G1N	S1	Jan 16 - Mar 26
Linear Algebra and Optimization	TAOG19	7,5	G1N	S2	Mar 27 - Jun 04
Mathematical Statistics	TMSK17	7,5	G1F	S1	Jan 16 - Mar 26
Mathematical Statistics SSCM	TMSK19	7,5	G1F	S2	Mar 27 - Jun 04
Swedish Language, Culture and Society 1	TS1G15	7,5	G1N	S1	Jan 23 - Apr 2
Swedish Language, Culture and Society 2	TS2K15	7,5	G1F	S2	Apr 3 - Jun 11

MASTER	COURSE CODE	CREDITS	LEVEL	STUDY PERIOD	DATES
CONSTRUCTION ENGINEERING****					
BIM - Management, Control and Evaluation*****	TBMS23	7,5	A1F	S1	Jan 16 - Jun 04
Parametric Design	TPDR23	7,5	A1N	S2	Mar 27 - Jun 04
COMPUTER SCIENCE AND INFORMATICS					
Consumer Behaviour in Online Contexts	TKTS22	7,5	A1F	S1	Jan 16 - Mar 26
Data Science Programming	TDPS22	7,5	A1F	S2	Mar 27 - Jun 04
Deep Learning	TDIS22	7,5	A1F	S2	Mar 27 - Jun 04
Ethics of Artificial Intelligence	TAIR22	7,5	A1N	S1	Jan 16 - Mar 26
Machine Learning	TMLS22	7,5	A1F	S1	Jan 16 - Mar 26
INDUSTRIAL ENGINEERING AND MANAGEMENT					
Deliver: Strategy, Planning and Operations	TDSS22	7,5	A1F	S1	Jan 16 - Mar 26
Developing Sustainable Supply Chain Operations	TSSS22	7,5	A1F	S2	Mar 27 - Jun 04
Human-System Integration	TS4S22	7,5	A1F	S2	Mar 27 - Jun 04
Leading Advanced Socio-Technical System	TATS22	7,5	A1F	S2	Mar 27 - Jun 04
Leading Sustainable Operations	TSOR22	7,5	A1N	S1	Jan 16 - Mar 26
MATERIALS AND MANUFACTURING					
Failure Analysis**	THAS26	6	A1F	S2	Mar 13 - May 7
Cast Design and Calculation**	TGKS26	3	A1F	S2	May 8 - Jun 4
Material Testing and Characterisation**	TMRR28	6	A1N	S1	Jan 16 - Mar 12
MECHANICAL ENGINEERING					
Continuum Mechanics	TMMS22	7,5	A1F	S2	Mar 27 - Jun 04
Design Methodology in Industrial Design Project***	TDMS22	7,5	A1F	S1	Jan 16 - Mar 26
Materials in Design	TKMR22	7,5	A1F	S2	Mar 27 - Jun 04
Microstructural Engineering	TMES22	7,5	A1F	S2	Mar 27 - Jun 04
Numerical Analysis	TNAR22	7,5	A1N	S1	Jan 16 - Mar 26
Realization of Industrial Design Project***	TRDS22	7,5	A1F	S2	Mar 27 - Jun 04
Sensation, Perception and Human Interaction in Design***	TSRS22	7,5	A1F	S1	Jan 16 - Mar 26
Surface Technology	TYTS22	7,5	A1F	S1	Jan 16 - Mar 26

\*Courses and regular exams end by 20 December in the autumn semester. There might be assignments to hand in online with deadline 15 January, which is the official end of the autumn semester. \*\*This course is given fully online. \*\*\*Courses within Industrial Design is only available for students admitted to a program in Industrial Design within Mechanical Engineering at the home university. Applicants must attach their portfolio to the exchange application. Limited number of places. The courses are given as a course package and cannot be taken separately. \*\*\*\*It is strongly recommended that the applicant has basic knowledge in BIM, for example BIM-based software such as Revit, ArchiCad or equivalent. \*\*\*\*\*Students applying for this course must have attended the course BIM - Requirements and Specifications.

EXPLANATION OF COURSE LEVELS

BACHELOR LEVEL

**G1N** - First cycle, has only upper-secondary level entry requirements

**G1F** - First cycle, has less than 60 credits in first cycle courses as entry requirements

**G2F** - First cycle, has at least 60 credits in first cycle courses as entry requirements

MASTER LEVEL

**A1N** - Second cycle, has only first cycle course(s) as entry requirements

**A1F** - Second cycle, has second cycle course(s) as entry requirements

This is an overview of the courses we expect to be offering in the academic year 2022-2023.

If there are additions or cancellations, these will be updated on our website. [JU.SE/JTH/COURSES](https://ju.se/jth/courses)





MAKE A DIFFERENCE.

## SCHOOL OF EDUCATION AND COMMUNICATION

The School of Education and Communication offers programmes within the areas of communication, teaching education, human resources and global studies. All programmes are based on both practice and science, and advanced research is part of the education from early on. Although all bachelor programmes are primarily taught in Swedish, there are many elective courses in English that are offered to our exchange students.

### A PLACE TO GET INSPIRED

We have a welcoming study environment offering a close dialogue with professors and lecturers. Openness, inclusion and creativity are words that describe both the educational programmes and the school's way of working.

### DRIVEN BY NEW IDEAS

Our research aims to constantly add new aspects to what we already know and

open up fresh platforms for knowledge, interaction and communication. The research areas focus on the conditions for education and communication. It spans the humanities, behavioral sciences, social sciences, theology, natural sciences and media and communication sciences. We offer doctoral programmes in education, media and communication science and disability research.

### FOCUS ON SUSTAINABILITY

Globalization, climate issues, digitalization and inclusion in society are aspects of sustainability that are central to both education and research. We have a new master environment, starting in August 2022, composed of three different programmes within the fields of Media and Communication Studies, Education, and Global Studies, with a joint thematic focus on sustainability.

## ROOF TOP GARDEN

On the top floor of the building we have a garden with a greenhouse, growing boxes and garden furniture. The Student association "Students for Sustainable Action" runs a project on urban farming where both Swedish and international students are involved.



### PROGRAMMES

#### COURSES IN ENGLISH

A number of courses within the programmes are offered in English for exchange students.

#### UNDERGRADUATE PROGRAMMES

- Human Resources, 180 credits
- International Work - Global Studies, 180 credits
- Media and Communication Science, 180 credits
- Teacher Education, 180-330 credits

#### MASTER PROGRAMMES

- Sustainable Communication, 60/120 credits\*
- Global Studies: Sustainable Societies and Social Change, 60/120 credits\*
- LeaDS - Learning, Digitalization, and Sustainability, 60/120 credits\*
- Interventions in Childhood, 60/120 credits\*

\*These programmes are also offered to international degree-seeking students, entirely in English.

### IMPORTANT DATES

**NOMINATION**  
(For partner universities)

**AUTUMN 2022**  
25 April  
**SPRING 2023**  
10 October

**APPLICATION**  
(For students)

**AUTUMN 2022**  
1 May  
**SPRING 2023**  
15 October

## "You'll make great friends and discover beautiful places"

### Philippine Le Jallé

former exchange student at JU from Deakin University, Australia

### WHY DID YOU CHOOSE TO GO ON EXCHANGE?

Having lived in different countries all my life, I was eager to discover a new culture. This is a lifetime experience and such a learning curve for everyone.

### WHAT IS THE BEST THING ABOUT JÖNKÖPING UNIVERSITY?

JU is a great university and with all its international students and they know how to make you feel at home. They won't hesitate to show you their culture and to find out about yours! You'll definitely love

the Fika culture and will love to have Fika with your new friends by the lake. It is definitely something I will be taking home with me! JU is so understanding towards exchange students and will want you to make the most of your stay by organizing trips around Scandinavia. You'll make great friends and discover beautiful places.

### WOULD YOU RECOMMEND EXCHANGE STUDIES TO OTHER STUDENTS?

I would definitely recommend going on exchange to anyone as it's a great

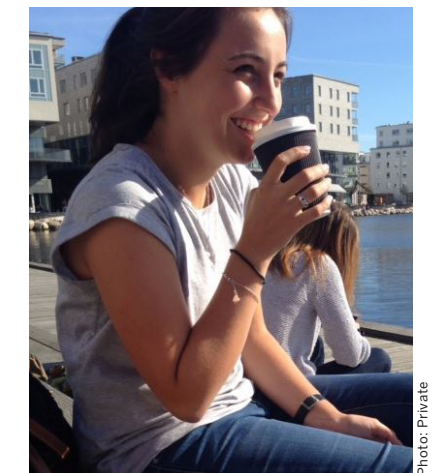


Photo: Private

experience, especially to JU. You'll not only love meeting both Swedish and international people, that will become friends for a lifetime. You will come home a different person that is for sure.



## COURSES – AUTUMN 2022

Students can only apply for courses at the JU school they are nominated to  
and with which their home university has an exchange agreement.

BACHELOR	COURSE CODE	CREDITS	LEVEL	STUDY PERIOD	DATES
HUMAN RESOURCES					
Conflict Management	LCMN12	7,5	G2F	A2	Dec 05 - Jan 22*
Leadership in a Global Context	LLGK17	7,5	G1F	A2	Dec 05 - Jan 22*
Organizing and Leading Change	LOCK12	7,5	G1F	A1	Aug 22 - Sep 25
Work and Inter-Cultural Encounters	LWIN12	7,5	G2F	A1	Sep 26 - Oct 30
GLOBAL STUDIES					
Management and Planning in International Development Work**	LMWG10	7,5	G1N	A1	Aug 22 - Jan 22*
Peace and Conflict Studies	LPCK10	15	G1F	A1	Aug 22 - Oct 30
MEDIA AND COMMUNICATION SCIENCE					
Communication Across Cultures	LACK19	7,5	G1F	A1	Aug 22 - Sep 25
Communication in a Global Media Context	LCGK19	7,5	G1F	A1	Sep 26 - Oct 30
Crisis Communication	LCCK19	7,5	G1F	A2	Dec 05 - Jan 22*
Cross-Cultural Advertising and Marketing Communication	LCAK19	7,5	G1F	A2	Dec 05 - Jan 22*
Leadership in a Global Environment	LLGK19	7,5	G1F	A2	Oct 31 - Dec 04
Strategic Brand Management	LSBK19	7,5	G1F	A1	Sep 26 - Oct 30
The Foundations of Journalism	LFJK12	7,5	G1F	A1	Aug 22 - Sep 25
TEACHER EDUCATION					
Outdoor Education	LOEG18	7,5	G1N	A1	Aug 22 - Jan 22*
School Located Studies I	LV1N17	7,5	G2F	A1	Sep 26 - Oct 30
School Located Studies II	LVBN17	7,5	G2F	A1	Sep 26 - Oct 30
GENERAL COURSES AND SWEDISH LANGAUGE					
Culture and Society in the English Language	LCSG18	7,5	G1N	A2	Oct 31 - Jan 22*
Development Studies	LDSN10	7,5	G2F	A2	Nov 21 - Jan 22*
International Relations	LIRN10	7,5	G2F	A2	Oct 03 - Nov 20
Literature in the English Language	LLGK18	7,5	G1N	A1	Aug 22 - Oct 30
Swedish Language, Culture and Society I	LS1G15	7,5	G1N	A1	Aug 29 - Oct 30
Swedish Language, Culture and Society 2	LS2K15	7,5	G1F	A2	Oct 31 - Jan 01*
MASTER	COURSE CODE	CREDITS	LEVEL	STUDY PERIOD	DATES
CHILD STUDIES					
Foundation Course 1 in Disability Research	LF1S27	7,5	A1F	A2	Oct 31 - Jan 22*
Introduction to Interventions in Childhood	LIIR21	15	A1N	A1	Aug 22 - Oct 30
Theory of Science and Scientific Methods in Child Studies	LTSR28	15	A1N	A2	Oct 31 - Jan 22*
Thesis planning for Two-year Master Degree Project in Child Studies	LT2S27	7,5	A1F	A2	Oct 31 - Jan 22*

\*Most courses in the autumn semester finish before Christmas or can  
be completed from home. Lectures and seminars can be scheduled until  
approximately 22 December. However some courses need to be completed  
at JU up until 20 January, 2023. Please take this into consideration when  
planning your departure.

\*\*For exchange students, this course will be finalized 23 September.

### EXPLANATION OF COURSE LEVELS

#### BACHELOR LEVEL

**G1N** - First cycle, has only upper-secondary level entry requirements

**G1F** - First cycle, has less than 60 credits in first cycle courses as entry requirements

**G2F** - First cycle, has at least 60 credits in first cycle courses as entry requirements

**G2E** - First cycle, has at least 60 credits in first cycle courses as entry requirements,

contains degree project for Bachelor of Arts/Bachelor of Science

#### MASTER LEVEL

**A1N** - Second cycle, has only first cycle course(s) as entry requirements

**A1F** - Second cycle, has second cycle course(s) as entry requirements

## COURSES – SPRING 2023

Students can only apply for courses at the JU school they are nominated to  
and with which their home university has an exchange agreement.

BACHELOR	COURSE CODE	CREDITS	LEVEL	STUDY PERIOD	DATES
GLOBAL STUDIES					
Conflict Transformation in Theory and Practice	LCTG13	7,5	G1N	S1	Jan 23 - Feb 26
Human Rights in International Development Work	LHRG18	7,5	G1N	S1	Feb 27 - Apr 02
Intercultural Encounters	LIEG12	7,5	G1N	S2	Apr 03 - May 07
Theories and Issues in International Relations	LTEG11	7,5	G1N	S1	Feb 27 - Apr 02
HUMAN RESOURCES					
Corporate Finance	LCFK12	7,5	G1F	S2	Apr 03 - May 07
Global Talent and Giftedness Management: To Understand and Keep Competence	LGTK18	7,5	G1F	S1	Feb 27 - Apr 02
Internal Marketing and Communication	LIMK12	7,5	G1F	S2	May 08 - Jun 11
Strategic HR for a Sustainable Working Life	LSCK11	7,5	G1F	S1	Jan 23 - Feb 26
MEDIA AND COMMUNICATION SCIENCE					
Communication Theories and Strategies	LCTG10	7,5	G1N	S2	May 08 - Jun 11
Graphic Print Production	LGPG18	7,5	G1N	S1	Jan 23 - Apr 02
Internet and Web Design	LIWK13	7,5	G1F	S1	Jan 23 - Apr 02
Radio Production and Live Broadcast	LRBK13	7,5	G1F	S2	Apr 03 - Jun 11
Video Production	LVPK13	7,5	G1F	S2	Apr 03 - Jun 11
TEACHER EDUCATION					
School Located Studies I	LV1N17	7,5	G2F	S1	Feb 27 - Apr 02
School Located Studies II	LVBN17	7,5	G2F	S1	Feb 27 - Apr 02
GENERAL COURSES AND SWEDISH LANGAUGE					
Culture and Society in the English Language	LCSG18	7,5	G1N	S2	Apr 03 - Jun 11
Degree Project	LDPP11	15	G2E	S2	Apr 03 - Jun 11
Gender Geographies	LGGG18	7,5	G1N	S2	Apr 03 - Jun 11
Intercultural and International Communication	LIIG19	7,5	G1N	S1	Jan 23 - Apr 02
Literature in the English Language	LLEG18	7,5	G1N	S1	Jan 23 - Apr 02
Practical English	LPEG19	7,5	G1N	S1	Jan 23 - Apr 02
Sport Traditions in a Swedish Perspective	LSTG19	7,5	G1N	S1	Feb 27 - May 07
Swedish Language, Culture and Society I	LS1G15	7,5	G1N	S1	Jan 23 - Apr 02
Swedish Language, Culture and Society 2	LS2K15	7,5	G1F	S2	Apr 03 - Jun 11
Thematic Social Science	LTSN11	15	G2F	S1	Jan 23 - Apr 02
MASTER	COURSE CODE	CREDITS	LEVEL	STUDY PERIOD	DATES
CHILD STUDIES					
Developmental Sciences and Intervention Processes	LDSR29	15	A1N	S2	Apr 03 - Jun 11
One Year Master Thesis in Interventions in Childhood	LTIR19	15	A1N	S1	Jan 23 - Apr 02
The Ecology of Inclusion, Participation and Children's Everyday Functioning	LEPS20	7,5	A1F	S1	Jan 23 - Apr 02
Two-year Master Degree Project in Child Studies - Empirical study	L2XS28	15	A1F	S1	Jan 23 - Jun 11

This is an overview of the courses we expect to be offering in the academic year 2022-2023.

If there are additions or cancellations, these will be updated on our website. [JU.SE/HLK/COURSES](https://ju.se/hlk/courses)





BECAUSE YOU CARE.

## SCHOOL OF HEALTH AND WELFARE

As one of Sweden's prime educators in the field of health sciences, health care and social work, the School of Health and Welfare offers high academic standards, distinct profile areas and extensive experience in education and research.

### QUALITY RESEARCH IS OUR FOUNDATION

The School of Health and Welfare is one of Sweden's leading schools, in part because of its top-quality research. Our healthcare research has been published extensively in renowned international journals.

### REAL-WORLD LEARNING ENVIRONMENT

Our experience in education and

research is long and substantial. You will be given access to a learning environment that is up-to-date and relevant. Our work-based education (VFU) was ranked as the best in Sweden by the Swedish Medical Association (Vårdförbundet) in 2021.

### GOOD STUDENT INTEGRATION

The School of Health and Welfare offers a number of courses and several

programmes taught in English where international students and Swedish students are integrated, thus ensuring a global and broadened perspective in the area of health and social welfare.

### INTERNATIONALISATION

The School of Health and Welfare has a strong focus on international collaboration in education and research with e.g. about sixty partner universities.

## PROGRAMMES

### COURSES IN ENGLISH

A number of courses within the programmes are offered in English for exchange students.

### UNDERGRADUATE PROGRAMMES

- Biomedical Laboratory Science, Laboratory Medicine, 180 credits
- Biomedical Laboratory Science, Clinical Physiology, 180 credits
- Dental Hygiene, 180 credits
- Diagnostic Radiology Nursing, 180 credits
- Nursing, 180 credits
- Occupational Therapy, 180 credits
- Prosthetics and Orthotics, 180 credits\*
- Social Work, 210 credits

\*Those programmes are also offered to international degree-seeking students, entirely in English.

### MASTER PROGRAMMES

- Gerontology, 60/120 credits
- Nordic Master Degree in Gerontology, 120 credits
- Nursing Science, 60/75 credits
- Occupational Therapy, 60 credits
- Occupational Therapy, 120 credits\*
- Product Development – Specialisation in Assistive Technology for Prosthetist/Orthotists or Engineers, 120 credits\*
- Quality Improvement and Leadership in Health and Welfare, 120 credits

## IMPORTANT DATES

**NOMINATION**  
(For partner universities)

**AUTUMN 2022**  
10 April  
**SPRING 2023**  
10 October

**APPLICATION**  
(For students)

**AUTUMN 2022**  
15 April  
**SPRING 2023**  
15 October

## “The student life is amazing”

### Gemma Black

former exchange student at School of Health and Welfare, JU from La Trobe University, Melbourne, Australia

### WHY DID YOU CHOOSE TO GO ON EXCHANGE?

I knew that I wanted to experience nursing practice in another country and that by doing an exchange I would be able to gain a significant amount of knowledge, skill and technique that I would be able to bring home to Australia. I also love travelling and this was the perfect opportunity to broaden my horizons, meet new people of different nationalities and flourish as an individual.

### WHAT IS THE BEST THING ABOUT JÖNKÖPING UNIVERSITY?

The student life is amazing, with plenty

of events for both regular and exchange students. The Kick Off week was lots of fun and the festival at the end was definitely the highlight for me.

### WHAT IS YOUR FAVOURITE MEMORY?

Swimming in the lake with my friends, plus all my travel adventures!

### WOULD YOU RECOMMEND EXCHANGE STUDIES TO OTHER STUDENTS?

Personally, nursing and caring for people is my passion – so being able to continue



Photo: Rebecca Nygren

studying my passion overseas is something I will cherish forever. I would highly recommend doing an exchange to all students – it's an incredible opportunity to gain independence and get a different perspective on your studies and future career.



COURSES – AUTUMN 2022

Students can only apply for courses at the JU school they are nominated to and with which their home university has an exchange agreement.

BACHELOR	COURSE CODE	CREDITS	LEVEL	STUDY PERIOD	DATES
NURSING					
Gerontological and Geriatric Nursing	HGGN10	9	G2F	A1	Sep 19 - Dec 25
Gerontological and Geriatric Nursing	HGGN11	4,5	G2F	A1	Sep 19 - Nov 27
Health and Health Problems in Children and Families	HHHN10	4,5	G2F	A2	Jan 02 - Jan 22*
Health and Welfare in a Changing Society	HHFN10	4,5	G2F	A1	Aug 29 - Sep 18
Palliative Nursing Care	HPON10	4,5	G2F	A1	Sep 19 - Dec 25
Psychiatric Nursing	HPNN10	4,5	G2F	A1	Sep 19 - Nov 27
Psychiatric Nursing	HPSN10	7,5	G2F	A1	Sep 19 - Dec 25
OCCUPATIONAL THERAPY					
Applied Occupational Based Health Promoting Methods for Older Persons	HTHN11	4,5	G2F	A1	Aug 29 - Jan 22*
Occupational Therapy for Activity Limitations in Disability and Disease	HASN19	30	G2F	A1	Aug 29 - Jan 22*
Occupational Therapy, Research Methods, Intermediate Course	HAFN10	7,5	G2F	A2	Nov 28 - Jan 22*
Enabling Participation for Children with Disabilities	HEPN10	4,5	G2F	A1	Aug 29 - Jan 22*
Leadership and Quality Improvement	HLKN11	10,5	G2F	A1	Aug 29 - Oct 30
PROSTHETICS AND ORTHOTICS					
Anatomy and Physiology, Basic Course	HANG18	7,5	G1N	A2	Nov 07 - Dec 11
SOCIAL WORK					
Leadership in Crisis Management	HLCK16	7,5	G1F	A2	Dec 12 - Jan 22*
Social Work, Participation and Inclusion	HDEN16	7,5	G2F	A1	Aug 29 - Oct 02
Social Work, Social- and Welfare Policy in a Swedish and International Perspective	HSWK19	7,5	G1F	A2	Nov 07 - Dec 11
Social Work with Groups and in Community	HSGN13	7,5	G2F	A1	Sep 26 - Nov 06

\*Most courses in the autumn semester finish before Christmas or can be completed from home. Lectures and seminars can be scheduled until approximately 22 December. However some courses need to be completed at JU up until 23 January. Please take this into consideration when planning your departure

COURSES – SPRING 2023

Students can only apply for courses at the JU school they are nominated to and with which their home university has an exchange agreement.

BACHELOR	COURSE CODE	CREDITS	LEVEL	STUDY PERIOD	DATES
NURSING					
Gerontological and Geriatric Nursing	HGGN10	9	G2F	S1	Feb 13 - May 21
Health and Health Problems in Children and Families	HHHN10	4,5	G2F	S2	May 22 - Jun 11
Health and Welfare in a Changing Society	HHFN10	4,5	G2F	S1	Jan 23 - Feb 12
Palliative Nursing Care	HPON10	4,5	G2F	S1	Feb 13 - May 21
Psychiatric Nursing	HPNN10	4,5	G2F	S1	Feb 13 - Apr 23
Psychiatric Nursing	HPSN10	7,5	G2F	S1	Feb 13 - May 21
OCCUPATIONAL THERAPY					
Occupational Based Health Promoting Methods for Older Persons	HHMN10	1,5	G2F	S1	Jan 23 - Jun 11
Occupational Therapy after War-Related Trauma	HKTN10	3	G2F	S1	Jan 23 - Jun 11
Occupational Therapy and Activity Limitations throughout Life	HAPN10	9	G2F	S1	Jan 23 - Mar 19
Occupational Therapy and Occupational Limitations when in Ill Health and vulnerable Life Situations	HALN10	9	G2F	S2	Apr 17 - Jun 11
Occupational Therapy, Clinical Placement	HAVN10	6	G2F	S1	Mar 20 - Apr 16
Global Perspective on Occupation	HGPN11	4,5	G2F	S2	May 22 - Jun 11
Understanding Participation for Children with Disabilities and their Families	HUCN10	1,5	G2F	S1	Jan 23 - Jun 11
PROSTHETICS AND ORTHOTICS					
Pathophysiology related to Prosthetics and Orthotics	HPOK19	7,5	G1F	S1	Jan 23 - Apr 02
ORAL HEALTH					
Oral Health, International Perspectives	HOIN10	7,5	G2F	S1	Jan 23 - Apr 02
RADIOGRAPHY					
Radiography - Reporting and Image Processing at Acute Injuries in the Skeleton	HRRN11	20	G2F	S1	Jan 02 - Mar 26
SOCIAL WORK					
Leadership in Crisis Management	HLCK16	7,5	G1F	S2	May 08 - Jun 11
Social Work, Participation and Inclusion	HDEN16	7,5	G2F	S1	Jan 23 - Feb 26
Social Work, Social- and Welfare Policy in a Swedish and International Perspective	HSWK19	7,5	G1F	S2	Apr 03 - May 07
Social Work with Groups and in Community	HSGN13	7,5	G2F	S1	Feb 27 - Apr 02

This is an overview of the courses we expect to be offering in the academic year 2022-2023. If there are additions or cancellations, these will be updated on our website. [JU.SE/HHJ/COURSES](https://ju.se/hhj/courses)

EXPLANATION OF COURSE LEVELS

BACHELOR LEVEL

**G1N** - First cycle, has only upper-secondary level entry requirements

**G1F** - First cycle, has less than 60 credits in first cycle courses as entry requirements

**G2F** - First cycle, has at least 60 credits in first cycle courses as entry requirements

MASTER LEVEL

**A1F** - Second cycle, has second cycle course(s) as entry requirements



# APPLICATION AND PREREQUISITES

## HOW TO APPLY

Once you have been nominated by your home university, you will receive information about how to apply in our online application.

## VISA/RESIDENCE PERMIT

Students from countries whose citizens are required to have a visa/residence permit are advised to contact the Swedish embassy or consulate in your home country to start your application for a student visa, which is a procedure that can take two months or more. You are recommended to apply online. In order to apply for a VISA, you need to have a full-time study load, 30 ECTS for one semester. For more information visit The Swedish Migration Agency: [migrationsverket.se](https://migrationsverket.se)

## COURSES

Course syllabuses, including the prerequisites, can be found on our website. You need to have the majority of your courses at the school to which you have been nominated to. We reserve the right to limit exchange student enrollment in courses. Please be aware that courses may

be cancelled if the minimum number of participants is not reached.

## LANGUAGE REQUIREMENTS

Although language test scores are not formally required, all students are expected to meet the minimum English requirements, see the website for details. The home institution is responsible for ensuring the students' fluency in English. Students without the adequate level of English run the risk of failing the courses.

## PREREQUISITES

The general prerequisite for bachelor exchange students is at least one year of completed university studies at the home institution before the exchange semester. For applicants interested in master level courses, we require qualifications equivalent of a bachelor degree of at least three years.

Read more about exchange studies at: [ju.se/exchangestudies](https://ju.se/exchangestudies)

## CREDITS AND WORKLOAD

In Swedish higher education, the workload of a course is based on the amount of credits that a course is worth. 1.5 credits

is equivalent to approximately 40 hours (1 week) of work, which includes lecture hours, group work, seminars, homework etc. Students participating in exchange will receive full credit for all academic work successfully carried out during their exchange semester. Full time study is 30 credits per semester which is equivalent to 30 ECTS credits.

## ACADEMIC CALENDAR

The academic year consists of 40 weeks, divided into two semesters: August – January (autumn semester) and January – June (spring semester). There are no holidays/study breaks during the semesters.

## EXAMINATIONS AND RE-EXAMINATIONS

There are different forms of examinations in the courses. Examinations can be scheduled on weekdays, evenings as well as Saturdays or Sundays. Jönköping University allows students to take re-examinations in failed courses. However, re-examinations can only be taken at Jönköping University.

# ACADEMIC CALENDARS

JÖNKÖPING INTERNATIONAL BUSINESS SCHOOL	
Autumn semester 2022	Spring semester 2023
Arrival and pick-up service: 18 - 21 Aug	Arrival and pick-up service: Dates to be confirmed, see updates on <a href="https://ju.se/accommodation">ju.se/accommodation</a>
Introduction week (compulsory): 22 Aug - 28 Aug	Introduction week (compulsory): 9 Jan - 15 Jan
Study Period Autumn 1 (A1): 29 Aug - 21 Oct	Study Period Spring 1 (S1): 16 Jan - 17 Mar
Examination Period Autumn 1 (A1): 24 Oct - 30 Oct	Re-Examination Period (A2): 12 Feb - 19 Feb
Study Period Autumn 2 (A2): 31 Oct - 23 Dec	Examination Period Spring 1 (S1): 18 Mar - 25 Mar
Examination Period Autumn 2 (A2): 15 Dec - 21 Dec	Study Period Spring 2 (S2): 27 Mar - 26 May
Re-examination (Period A1) + Re-examination (Period S2): 9 Jan, 2022 - Jan 15, 2023	Examination Period Spring 2 (S2): 27 May - 3 June
	Re-examination Period (S1): 7 June - 11 June

SCHOOL OF ENGINEERING	
Autumn semester 2022	Spring semester 2023
Arrival and pick-up service: 18 - 21 Aug	Arrival and pick-up service: Dates to be confirmed, see updates on <a href="https://ju.se/accommodation">ju.se/accommodation</a>
Introduction week (compulsory): 22 Aug - 28 Aug	Introduction week (compulsory): 9 Jan - 15 Jan
Study period 1: 29 Aug - 14 Oct	Study period 3: 16 Jan - 17 Mar
Exam period 1: 15 Oct - 23 Oct	Re-exam period (period 2): 11 Feb - 19 Feb
Study period 2: 24 Oct - 9 Dec	Exam period 3: 18 Mar - 26 Mar
Exam period 2: 12 Dec - 20 Dec	Study period 4: 27 Mar - 26 May
Re-exam period (period 1+4): 7 Jan - 15 Jan, 2023	Exam period 4: 27 May - 4 Jun
	Re-exam period (period 3): 5 Jun - 12 Jun

SCHOOL OF EDUCATION AND COMMUNICATION	
Autumn semester 2022	Spring semester 2023
Arrival and pick-up service: 18 - 21 Aug	Arrival and pick-up service: Dates to be confirmed, see updates on <a href="https://ju.se/accommodation">ju.se/accommodation</a>
Introduction Week (compulsory): 22 Aug - 28 Aug	Introduction Week (compulsory): 16 Jan - 22 Jan
Course period including regular exams: 22 Aug - 22 Dec/20 Jan *	Course period including regular exams: 23 Jan - 9 June

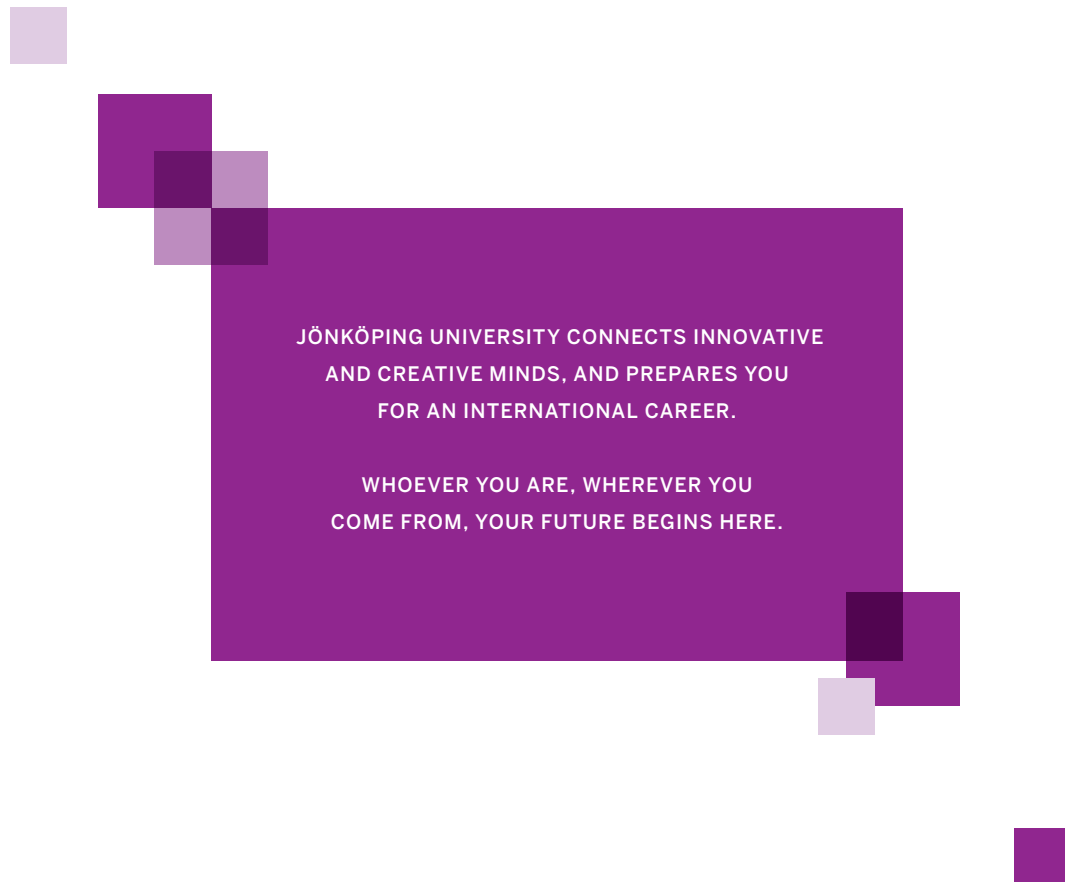
SCHOOL OF HEALTH AND WELFARE	
Autumn semester 2022	Spring semester 2023
Arrival and pick-up service: 18 - 21 Aug	Arrival and pick-up service: Dates to be confirmed, see updates on <a href="https://ju.se/accommodation">ju.se/accommodation</a>
Introduction week (compulsory): 22 Aug - 28 Aug	Introduction week (compulsory): 16 Jan - 22 Jan
Course period including regular exams: 22 Aug - 22 Dec/22 Jan *	Course period including regular exams: 23 Jan - 11 June

*IMPORTANT INFORMATION:	
Most courses in the autumn semester finish before Christmas. Lectures and seminars can be scheduled until approximately 23 December.	<b>However some courses need to be completed at JU up until approximately 22 January.</b> Please take this into consideration when planning your departure.

## GOOD THINGS TO KNOW:

<b>Health insurance</b> Exchange students admitted to JU receive a supplementary health insurance, which covers emergency medical and dental care (conditions apply). For more information please visit <a href="https://ju.se/studenthealthcare">ju.se/studenthealthcare</a>	on your individual life-style. As a student in Jönköping, it is recommended that you have around 8 568 SEK per month, covering the following (the prices below are approximate):	• Miscellaneous: 1 548 SEK TOTAL: 8 568 SEK.
<b>Cost of living</b> Living costs in Sweden depend largely	• Accommodation: 3,000-6,500 SEK depending on location • Food: 2,000 SEK • Phone: 300 SEK • Local travel: 550 SEK	All students, including exchange students, are required to pay the obligatory student union membership fee, which is approximately 300 SEK per semester. Compare your city's cost of living with the costs in Jönköping at <a href="https://numbeo.com">numbeo.com</a>





JÖNKÖPING UNIVERSITY CONNECTS INNOVATIVE  
AND CREATIVE MINDS, AND PREPARES YOU  
FOR AN INTERNATIONAL CAREER.

WHOEVER YOU ARE, WHEREVER YOU  
COME FROM, YOUR FUTURE BEGINS HERE.

JÖNKÖPING UNIVERSITY  
INTERNATIONAL OFFICE  
P.O. BOX 1026  
SE-551 11, JÖNKÖPING, SWEDEN  
TELEPHONE: +46 36 10 10 00  
VISITING ADDRESS: GJUTERIGATAN 5

INCOMING.STUDENT@JU.SE  
WEB: JU.SE AND JU.SE/EXCHANGESTUDIES

FOLLOW US ON SOCIAL MEDIA:  
FACEBOOK.COM/JUINTERNATIONALRELATIONS  
FACEBOOK.COM/JONKOPINGUNIVERSITY



Scan code for  
education support