



JÖNKÖPING UNIVERSITY

SHORT FACTS



THIS IS

ON OUR WAY TO JÖNKÖPING INTERNATIONAL UNIVERSITY 2025



VISION

We build an international university in Jönköping.

We attract highly qualified, inventive and enterprising people from all over the world.

We contribute to sustainable prosperity in the region where we reside, making way for knowledge based innovation and enterprise.

FACTS AND FIGURES

Jönköping University is a modern institution, characterized by a high degree of internationalization, an entrepreneurial spirit and extensive collaboration with surrounding society. It operates on the basis of an agreement with the Swedish Government and conforms to national degree regulations and quality requirements.

➤ **11,000** students, of which **2,000** are international students from **70** countries

➤ **830** employees

➤ **70** full professors, **40** associate professors and **150** assistant professors

➤ **200** PhD students

➤ **80** study programmes

➤ **170** single-subject courses

➤ Foundation courses

➤ **350** partner universities worldwide

➤ **800** host companies in business and industry and **1,000** partner schools

GUIDING VALUES

- Be professional.
- Be inventive and enterprising.
- Be international at heart.
- Stay curious and continue to learn.

Approximate numbers. The data reported is from 2016. We refer to the Annual Report for time series, or Jönköping University's website ju.se for more information.



COLLABORATION AND EXTERNAL ENGAGEMENT

Increasing external engagement is a focus area for all initiatives at Jönköping University. Collaboration and co-production with business and industry as well as with the public sector contribute to the development as well as the relevance and quality of the university's activities. At the same time, Jönköping University contributes to the development of society at a regional, a national and an international level.

- Custom-made commissioned education.
- Industrially related final year projects and theses
- **800** host companies within business and industry.
- **1,000** partner schools.
- Placement studies and internships.
- Research projects with industry and other partners.

SCIENCE PARK

Science Park Jönköping provides support for the start-up, development and growth of business ventures. It is a meeting place for entrepreneurs, students and researchers and approximately 70 enterprises are started each year by students.

EDUCATION

Students and staff from all over the world, combined with an international perspective throughout all education, offer students at Jönköping University an intercultural experience and prepare them for working in an international context in Sweden and abroad.

Students at Jönköping University get an education with high academic standards and profound real-world relevance. Contacts with business and society are included in the programmes, and the majority of students find relevant jobs after graduation.

Jönköping University offers approximately 80 programmes and specialisations on Bachelor's and Master's level, as well as research education. The University also offers preparatory programmes, or Pathway programmes, designed for international students.

EDUCATION CONDUCTED IN ENGLISH ON ALL LEVELS

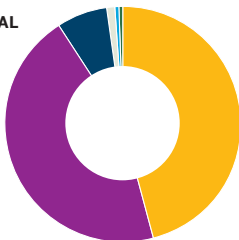
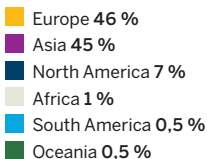
- Pathway programmes –
Foundation courses
- Higher Education Diploma
- Bachelor's programmes
- Master's programmes
- Doctoral programmes



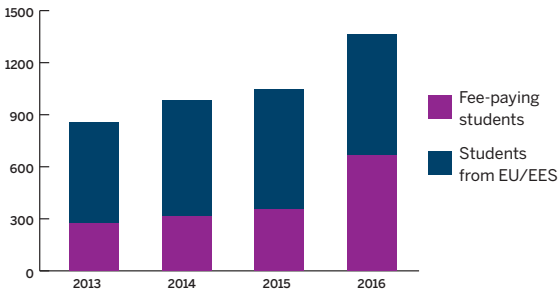
STUDENTS FROM ALL OVER THE WORLD

Jönköping University has an international profile and students and staff are offered an international environment both on campus and abroad. The University is one of the top universities in Sweden in terms of international student exchange and has 2,000 international students from all over the world. The number of international students from outside EU/EES enrolled in a study programme has steadily increased over the years.

WHERE DO OUR INTERNATIONAL STUDENTS COME FROM?



INTERNATIONAL PROGRAMME STUDENTS 2013–2016





RESEARCH

High quality as well as quantity of research provides education based in research and enables collaboration with the surrounding society. This way, Jönköping University contributes to meet societal challenges in promoting sustainable development.

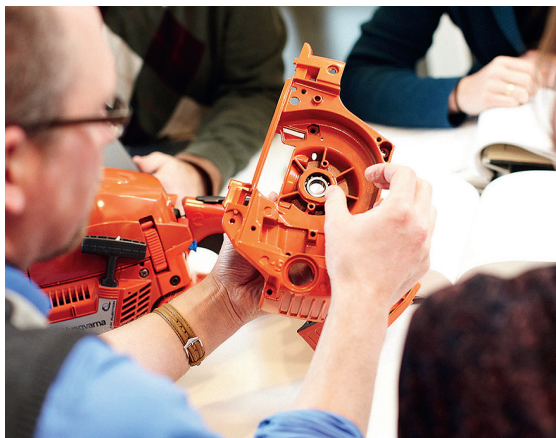
FOCUS AREAS WITHIN RESEARCH

- Entrepreneurship, ownership and renewal
- Technical expertise and know-how to small and medium-sized enterprises
- Health, care and social work from a holistic perspective
- Conditions for education and communication

RESEARCH EDUCATION

Jönköping University is entitled to issue doctoral degrees in the disciplinary research domain of humanities and social sciences. Within technology, the university is entitled to issue licentiate and doctoral degrees in the field of Industrial Product Development.

- No. 1 in Europe and no. 3 in the world in **family business research**. Ranked as one of the top 25 business schools in family business education and research (Family Capital).
- World leading in research on **materials and manufacturing technology for casting**. Collaborations with eg. Volvo, Scania and Husqvarna.
- World renowned **interdisciplinary research in ageing**. Proximity to practice in nursing and access to databases of large-scale longitudinal population studies.
- Research within **children, health, intervention, learning and development** based on the WHO's health classifications and associated with the leading European programme the Swedish Institute for Disability Research.





FACTS

- **2,000** students
- **160** employees
- **13** full professors
- **65** doctoral students
- **5** research areas
- **3** research centres
- **60** international partner universities

SCHOOL OF HEALTH AND WELFARE

The School of Health and Welfare is one of Sweden's foremost educational institutions in the fields of health, health care and nursing, and social work. Research is conducted within the research areas: ADULT (Alienation, Disability, Unify, Life style and Treatment), ARN – J (Aging Research Network – Jönköping), CHILD, Improvement, Innovation and Leadership for Health and Welfare and Social Welfare, and the research centres Biomedical Platform, Centre for Oral Health, and Jönköping Academy for Improvement of Health and Welfare.



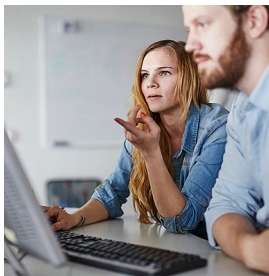
FACTS

- **4,000** students
- **170** employees
- **12** full professors
- **30** doctoral students
- **4** research areas
- **100** international partner universities
- **1,000** partner schools



SCHOOL OF EDUCATION AND COMMUNICATION

The School of Education and Communication offers education in the areas of teaching, media and communication studies, international work and human resources. All programmes are based on both science and practice. The school has extensive activities within commissioned education towards professional training. Research is conducted within the research areas Lifelong Learning, Media and Communication Studies, Learning Practises inside and outside School and CHILD.



FACTS

- **2,700** students
- **170** employees
- **18** full professors
- **40** doctoral students
- **80** international partner universities
- **400** host companies

SCHOOL OF ENGINEERING

The School of Engineering is one of Sweden's leading educators in the field of engineering and a member of the CDIO initiative, a prestigious collaboration between leading engineering schools worldwide. The school has an extensive host company programme and offers education that equips students not only with technical knowledge and engineering skills but also with skills within leadership, communication, business and sustainability. Research and doctoral education are targeted at industrial product realisation in cooperation, especially applications for small and medium-sized enterprises.



FACTS

- **2,100** students
- **130** employees
- **28** full professors
- **70** doctoral students
- **7** research centres
- **5** disciplines
- **150** international partner universities
- **300** host companies



JÖNKÖPING INTERNATIONAL BUSINESS SCHOOL

Jönköping International Business School offers competitive education, doctoral education and research in business administration, commercial and tax law, economics, informatics and statistics. The school's mission is to advance the theory and practice of business, with specific focus on entrepreneurship, ownership and renewal. Jönköping International Business School was the first business school in Sweden to receive both EQUIS and AACSB accreditations.

VALUE PROPOSITIONS

TO OUR STUDENTS

High academic standard and profound real-world relevance.

An inspiring international study environment on campus.

Excellent career and entrepreneurial opportunities in Sweden and abroad.

TO OUR EXTERNAL PARTNERS

Educating people with internationally competitive competence for future working life.

Collaborating to solve future challenges through research and development.

Tailoring academic commissioned education for our partners needs.

TO OUR NATIONAL AND REGIONAL POLICY STAKEHOLDERS

Together with our partners we put science to work for a competitive Swedish industry and public sector.

We contribute to economic, social and cultural prosperity in the region where we reside.



Jönköping University
P.O. Box 1026
SE-551 11 Jönköping
Sweden

+46 (0)36 10 10 00
info@ju.se

facebook.com/jonkopinguniversity
instagram: @jonkopinguni
twitter: @jonkopinguni



JÖNKÖPING UNIVERSITY