

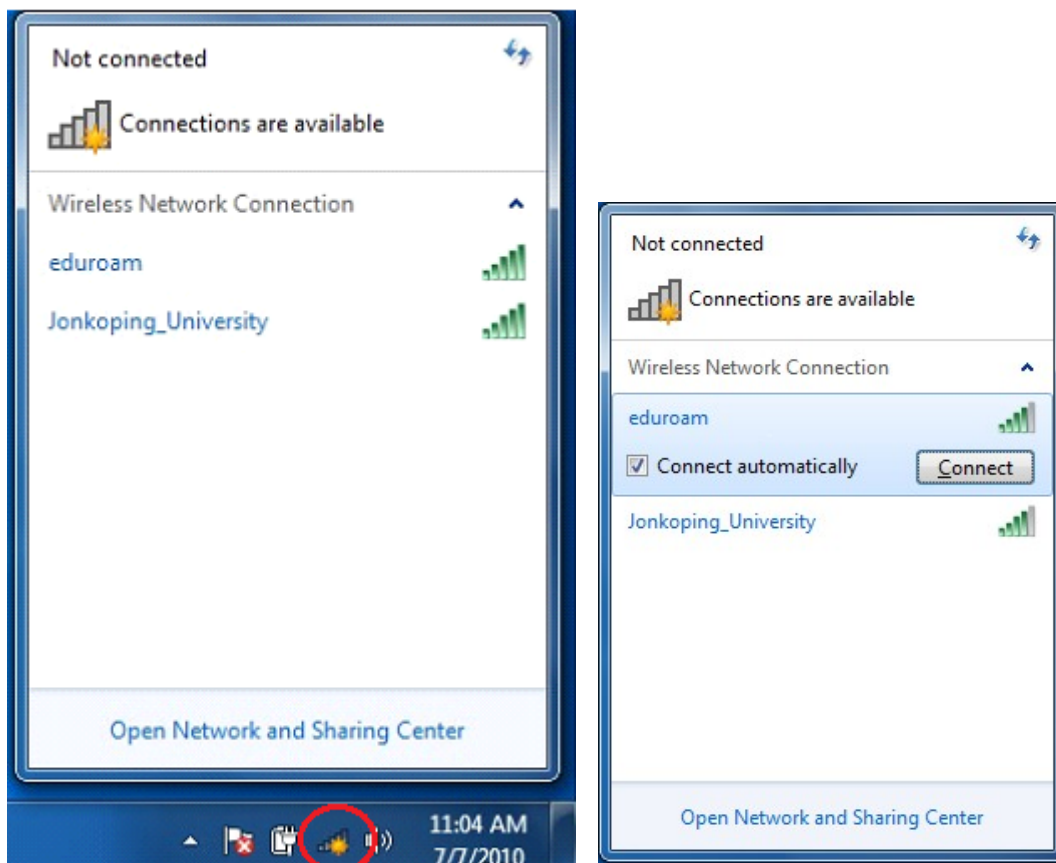


Connecting a laptop running Windows 7 or Vista to the wireless network Eduroam.

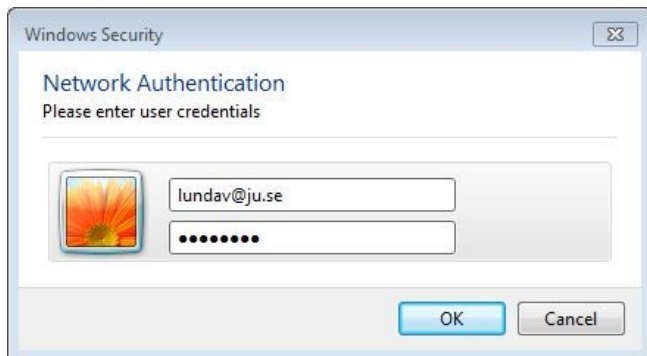
Make sure your wireless network is enabled.

Click on the icon in the lower right corner to list the available networks.

Click on Eduroam and then Connect.



Type in your username followed by @ju.se and then your Eduroam-password.
If you're not a student at Jönköping University, type in your username and password provided by your home university.



Click on Connect.
Important! Click Connect as soon as possible!

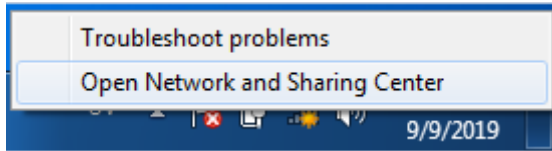


You are now connected to Eduroam.

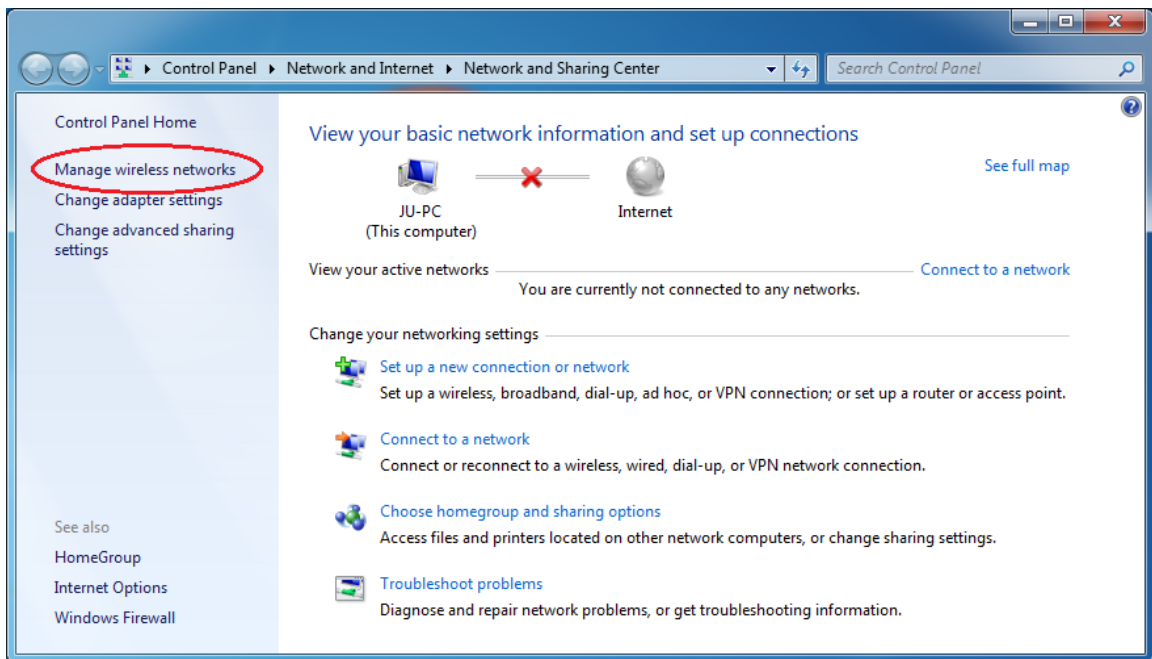
Troubleshooting

If it doesn't work to connect to Eduroam because the login window keeps on returning, follow the bellow instructions

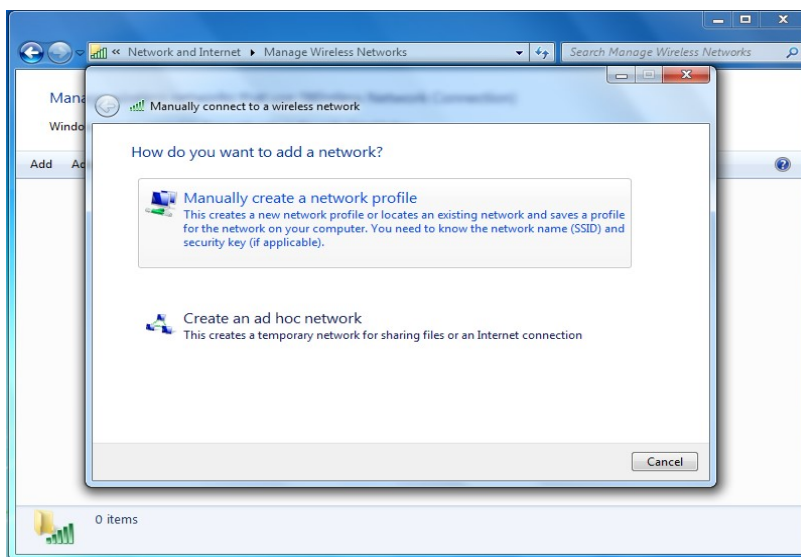
Right click the Network icon in the lower right corner.
Click on Open Network and Sharing Center.



Click on Manage wireless networks.

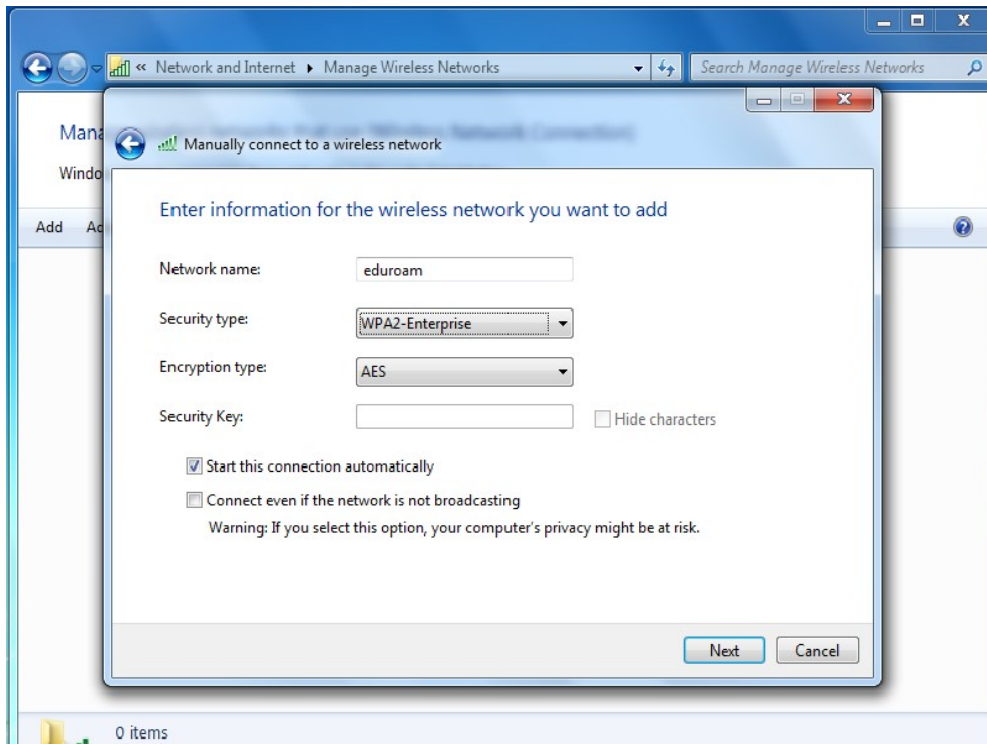


Click on add and then Manually create a network profile

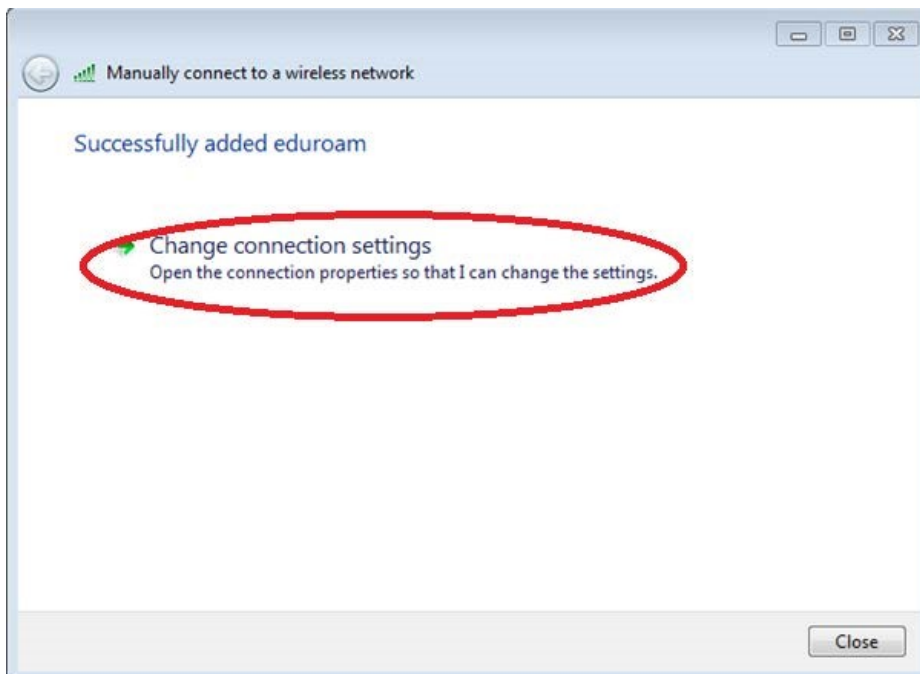


Enter the information as displayed below.

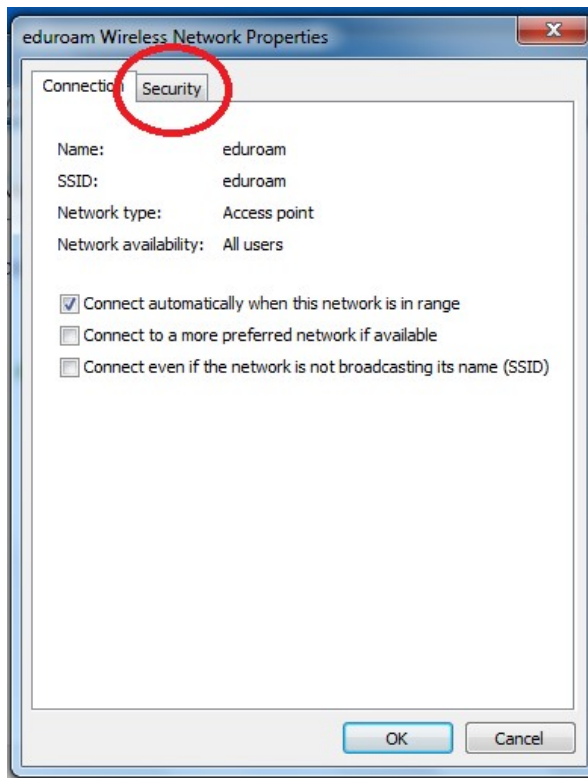
Network name: eduroam
Security type: WPA2-Enterprise
Encryption type: AES



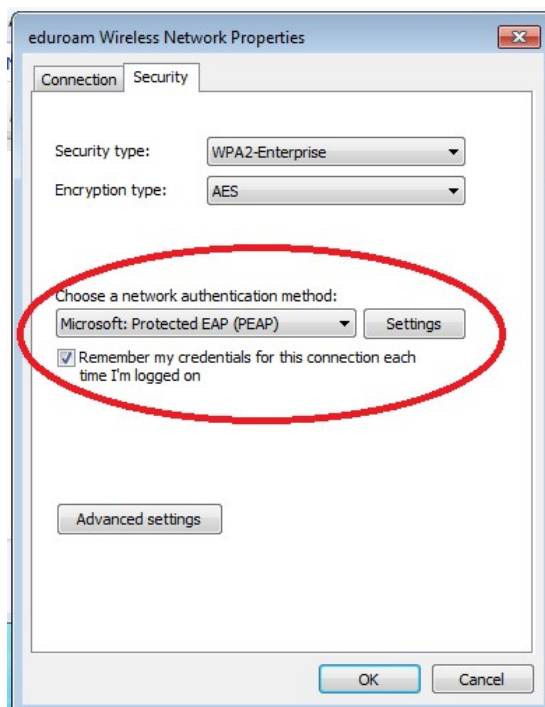
Click on Change connection settings.



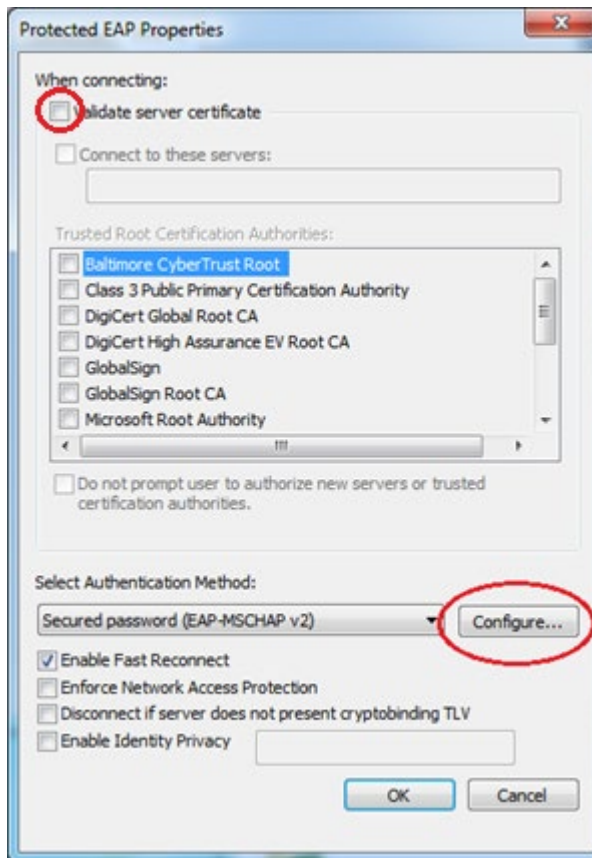
Make sure that the settings are set as displayed in the image below and then click on Security



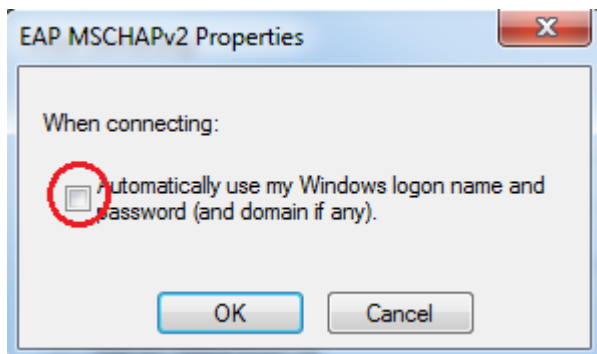
Make sure that the settings are set as displayed in the image below and then click on Settings.



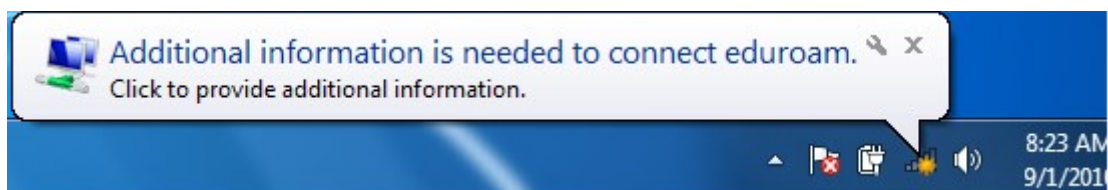
Make sure that the settings are set as displayed in the image below and then click on Configure



Uncheck Automatically use my Windows login name and password and click OK.



Click on the pop-up message and type in your username followed by @ju.se and your Eduroam password.



Still not working?

- Check your firewall settings

Do you get an error message that you are typing in the wrong password or you are unsure if you are typing in the correct password.

- Sign in at www.ju.se/myaccount and change your Eduroam password

Note!

You now have a connection to the network with a public IP-adress.

It is therefore important that you have a firewall and antivirus software installed on your computer.

Any abuse or charge of abuse will lead to disconnection of your account from the Jonkoping University network.